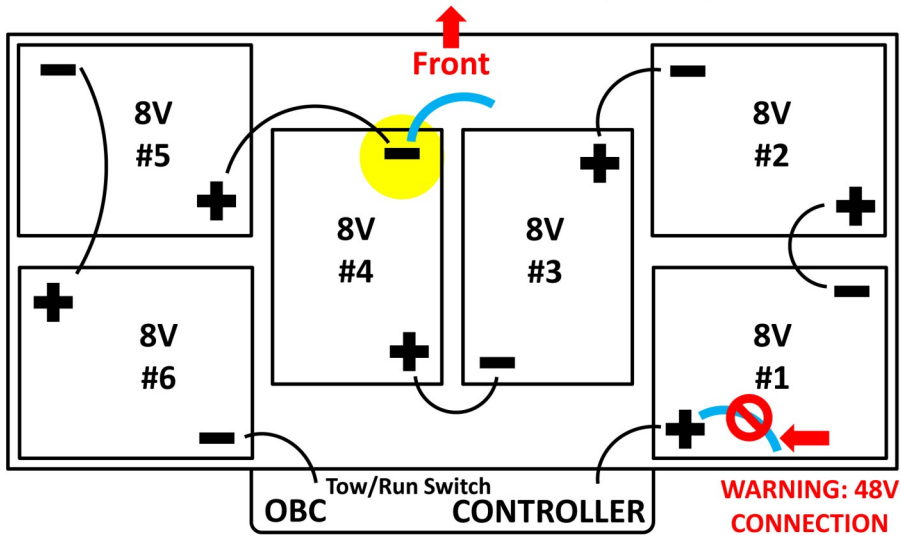
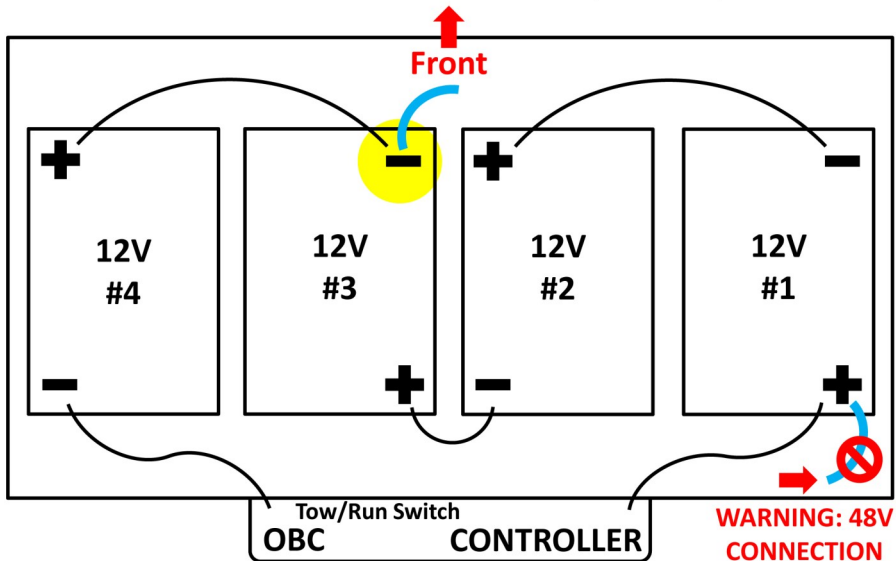


## 2008.5+ Club Car Precedent with 8 Volt Batteries



## 2008.5+ Club Car Precedent with 12 Volt Batteries



Watch this installation and others on YouTube:  
[www.youtube.com/user/GolfCartInstructions](http://www.youtube.com/user/GolfCartInstructions)



LGT-396

Bucket Kit, Basic Wire Harness

Club Car Precedent, 08+

Installation Instructions



Contents of LGT-396 Basic Wire Harness Bucket Kit:

a (1 ea.) LGT-396 Basic Harness Bucket Kit

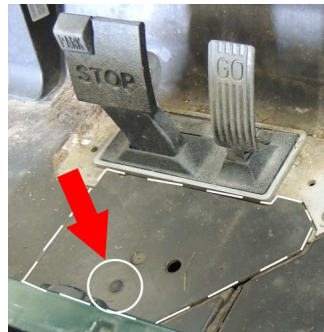
**Note:** Electric Club Car Precedents manufactured after January 1, 2008 require an additional harness (LGT-396) to allow the installation of light kits. This harness can be used for a 12V or 8V battery configuration. A Voltage Reducer is recommended for Precedents with an 8V battery configuration.

**Caution:** Please read through the instructions carefully. Before starting this project, remove the system positive and negative connections from the battery or battery pack.

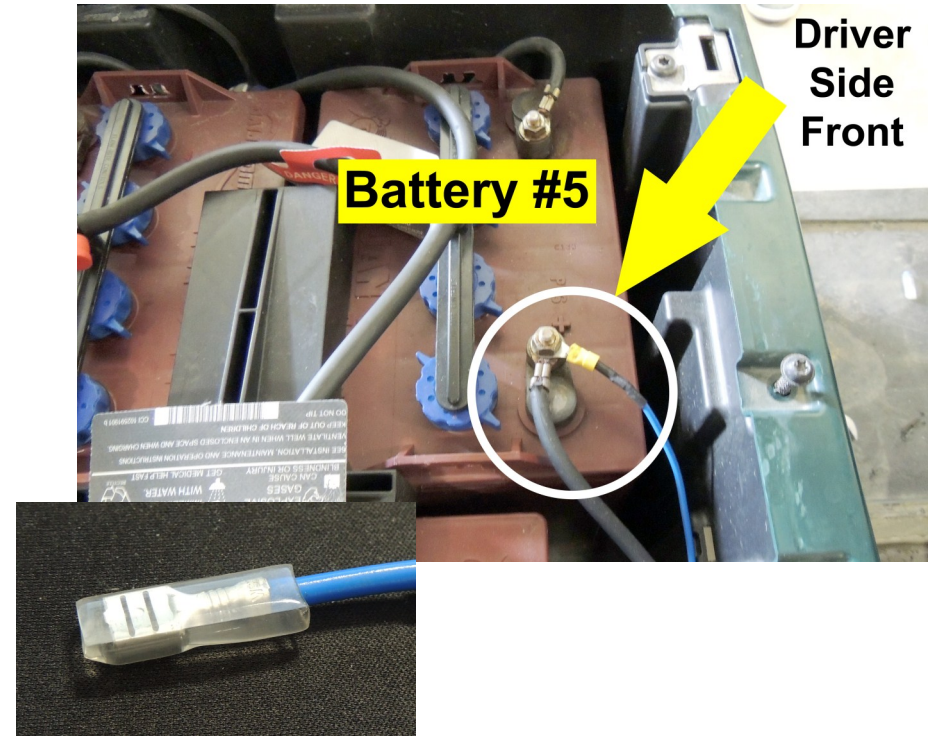
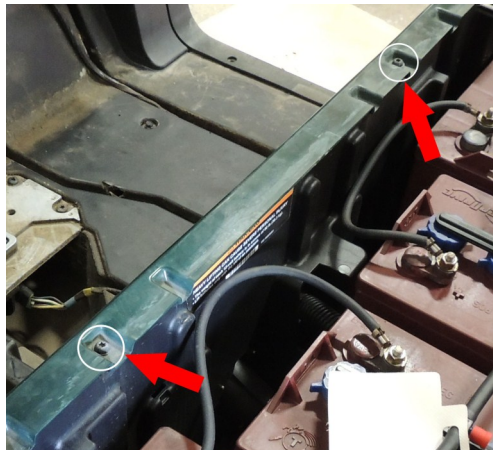
The following instructions show the batteries in the factory configuration as illustrated in the diagram on the last page. Your configuration may vary. Test all batteries with a voltage meter prior to installation to determine the output voltage. **Connecting lights to a voltage higher than 12 Volts may damage the lights and void any and all warranties.** Installer assumes all responsibility for damage.

## Installation Preparation

1. If the vehicle is ON, turn the key to the OFF position.
2. Completely remove the front seat bottom cushion to expose the battery compartment. Retain for reassembly.
3. Place the TOW/RUN Switch in the TOW position (electric carts).
4. Remove the system's positive and negative connections from the battery or battery pack.
5. Engage the parking brake.
6. Loosen the (4) Torx screws that secure the floor mat and retainer rocker panels to the vehicle. Lift out the floor mat. Retain hardware and mat.
7. Remove the rivet on the pedal group access panel and remove the panel. Retain hardware and panel.



8. Remove and retain the front body screws.
9. Using a small screwdriver, pry the receptacle cover from vehicle. Retain cover.

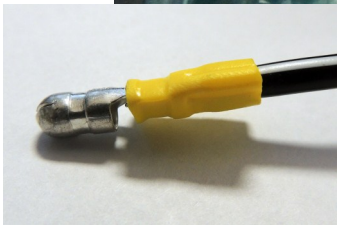
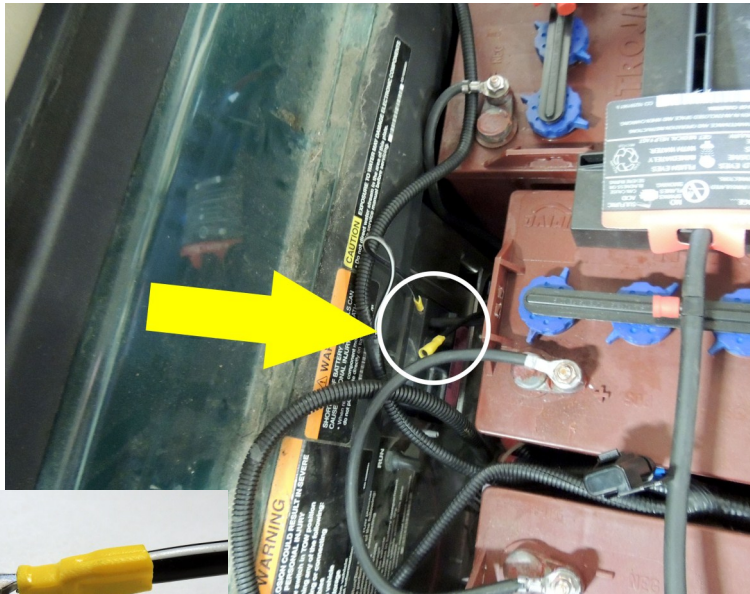


Driver  
Side  
Front

This completes the installation of your LGT-396 Basic Wire Harness Bucket Kit. Please enjoy safely!



8. Behind Battery #3 (12V System) or #4 (8V System) (see photo) is a black #12 wire with a yellow female bullet connector. This is the ground. Connect the yellow male bullet connector on the new wire harness with this yellow female bullet connector.

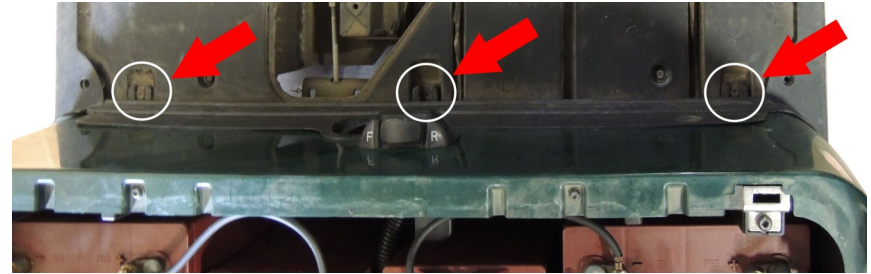


9. Connect the blue wire on the new harness to the #12 wire with the male connector on battery #3 (12V System) or battery #5 (8V System). The blue wire will have a female spade connector. If the male connector is not present on battery #3 or #5 a ring terminal can be used in it's place.

**NOTE:** A voltage reducer is recommended when installing the harness to an 8 volt battery configuration.

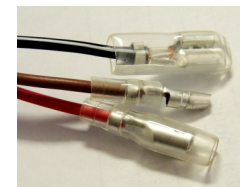
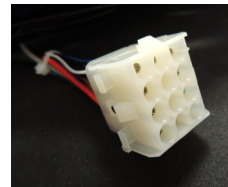
**CAUTION:** DO NOT connect to the blue wire on battery #1 on either system. This will connect to a 48 volt power source and will damage the lights. If in doubt as to which battery is correct, test them with a voltage reader.

10. Remove and retain the (3) screws that secure the lower body trim to the body. Lift off the lower body trim. Use caution not to brake the tabs on the trim when removing it.

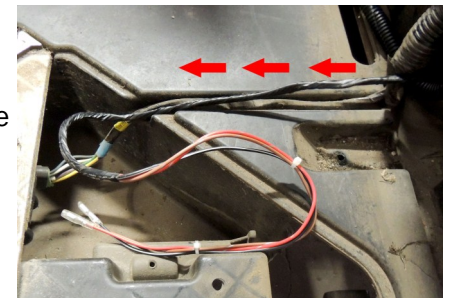


#### Wiring Harness Installation (Photos are for 8-Volt Battery Configuration)

1. Identify the 12-Pin Connector and Brake Light Wires on the LGT-396 harness. Feed the connector and brake light wires through the battery compartment and through-hole where the existing main harness feeds (below the F/R switch location).



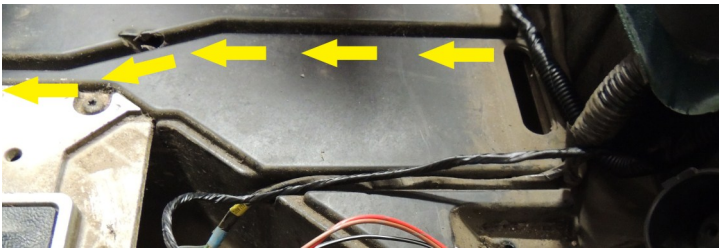
2. Feed the Brake Light Wires through the center floor channel into the pedal group compartment. Use cable ties to secure the wires to the existing harness.



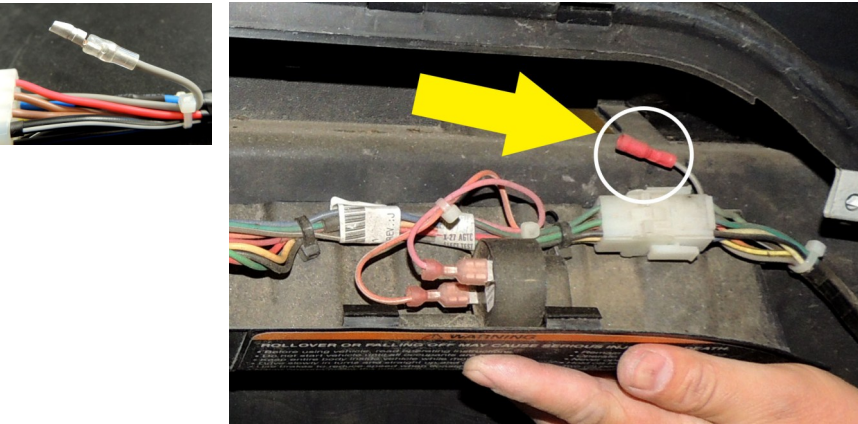
- Remove the dash panel by removing the (3) Torx screws that secure the dash panel to the vehicle. Retain all hardware for reinstallation of the dash.



- Feed the 12-pin connector along the floor channel with the main harness (on the passenger side) and up under the dash. Secure with cable ties.

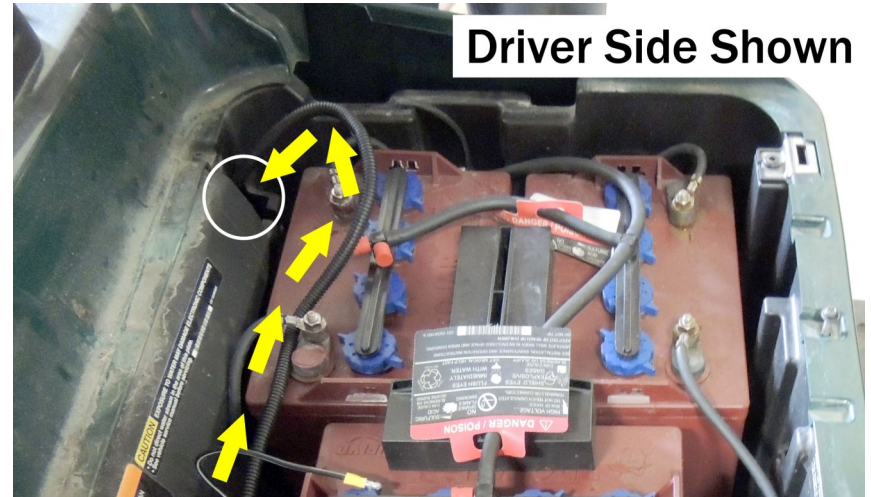


- Connect the male bullet connector (gray wire) on the LGT-396 to the red female bullet connector (gray wire) on the factory harness.

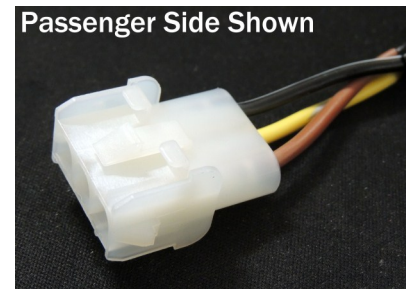


- Cut holes in the rear body for the tail lights. Refer to the instructions included in the light kit for hole size and location.

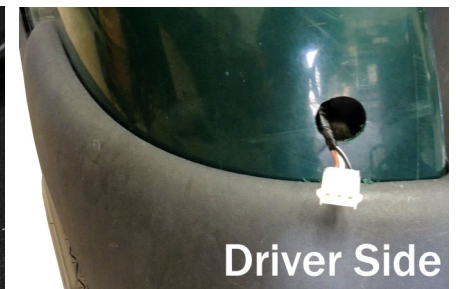
- Using a wire snake or fish tape (not included), route the tail light wires through the holes in the upper corners of the battery compartment to the holes drilled for the taillights in Step 6. The passenger's side has a yellow wire in the 3-plug connector. The driver side has a white wire in the 3-pin connector.



Driver Side Shown



Passenger Side Shown



Driver Side