



[www.alltraxinc.com](http://www.alltraxinc.com)

Installation guide for XCT controllers  
on 2008-2017 Club Car Precedent  
models.

# Kit Contents

X2



Nylon Washer 375

X2



Nylon Washer 125

X4



Flat Washer

X4



Nylon Nut 1/4 x 20

X2



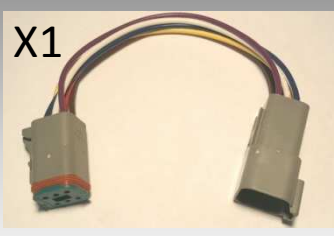
Bolt 1/4 x 20 x 2"

X2



Bolt 1/4 x 20 x 1.75"

X1



OBC Extension



Drill Template

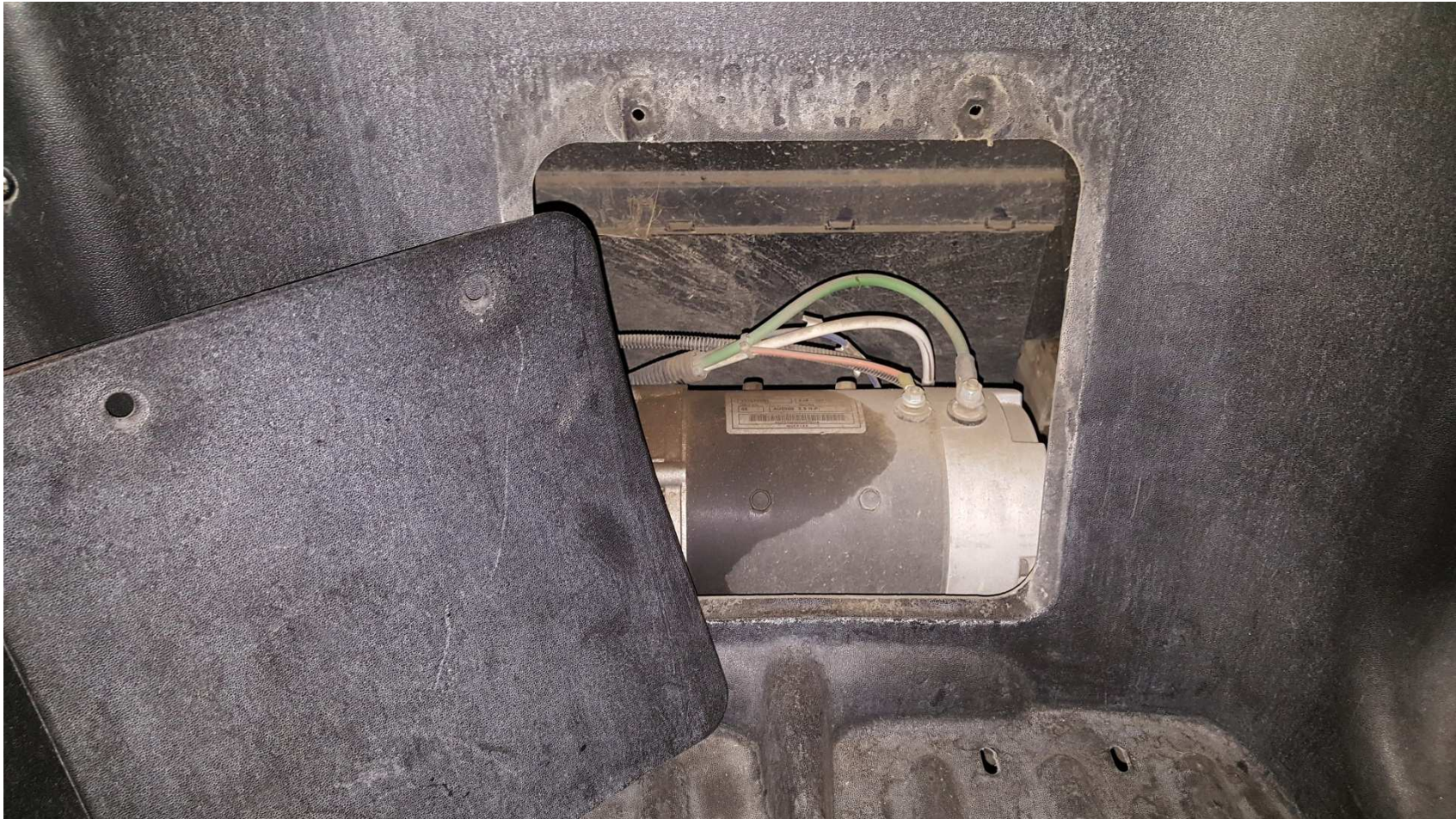


4 AWG 16" 5/16  
Ring Terminal

## **WARNING:**

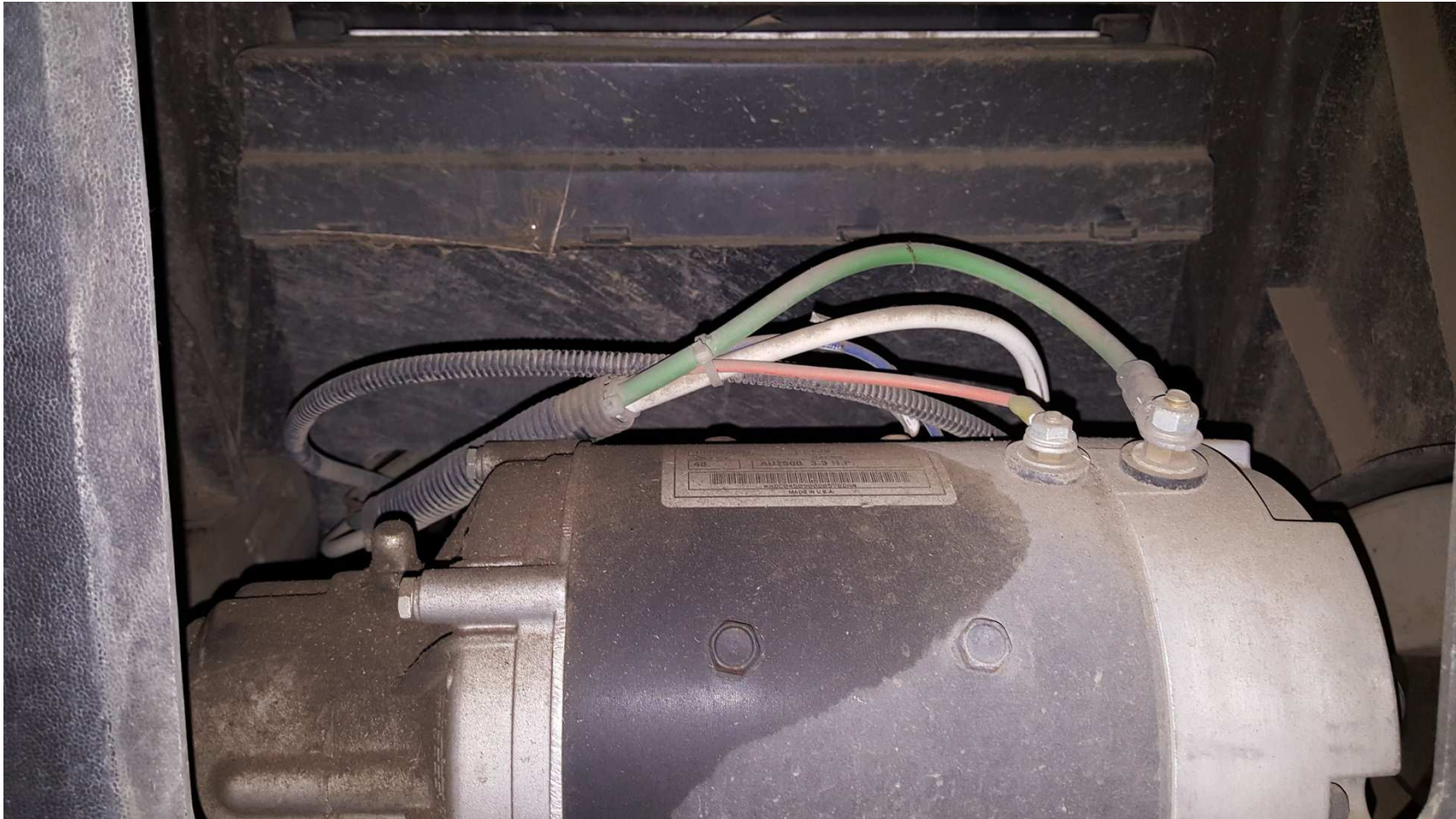
***This installation should be done by a certified golf cart technician or someone trained in the craft.***

Step 1: Remove the plastic cover to access the motor and controller compartment.





Step 2: Remove the plastic cover that goes over the stock controller. Remove the wires that go to the motor. Also unplug the speed sensor.



Step 3: Remove 4 batteries leaving the 2 shown in the picture.

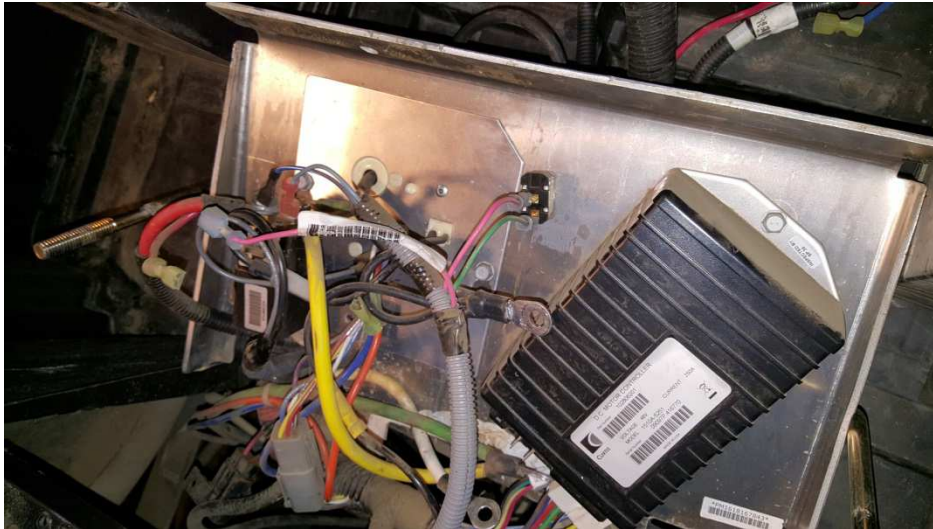




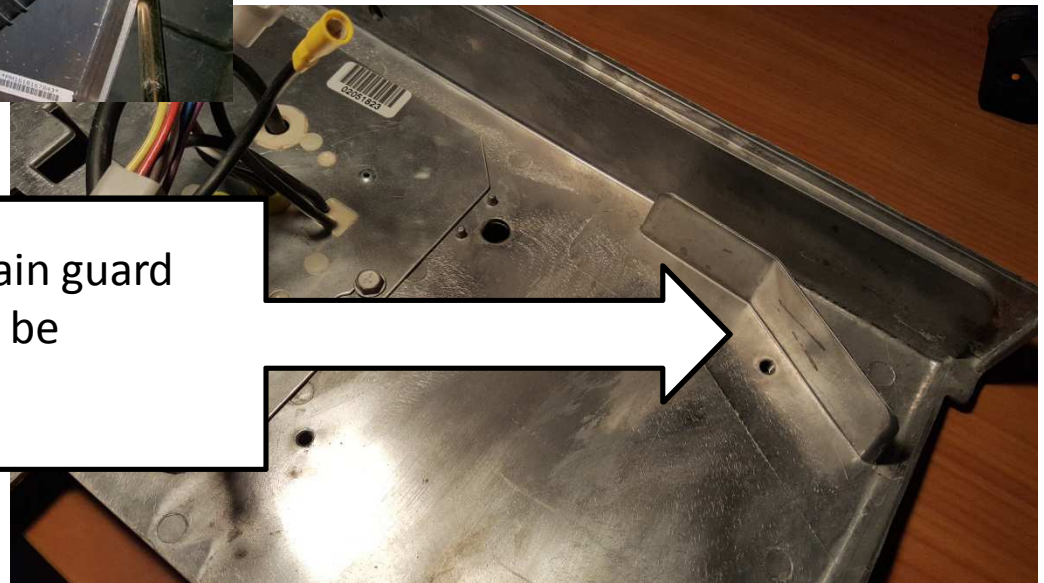
Step 4: Remove the star screw holding the mounting plate in place.



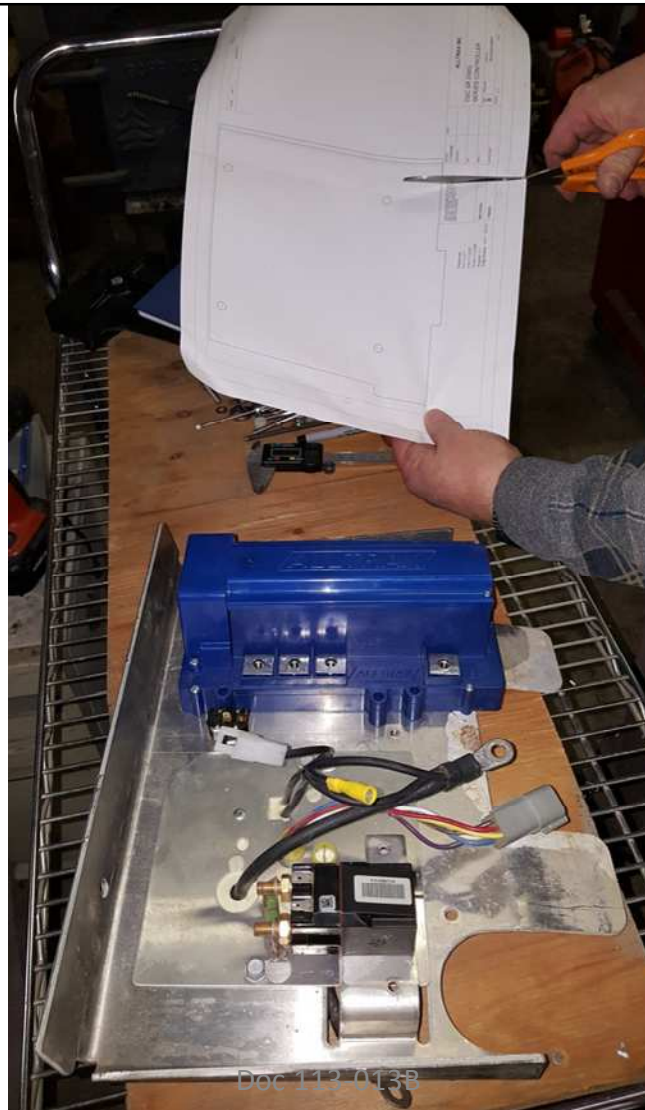
Step 5: Pull the mounting plate up and forward and remove all the cables from the controller, OBC and contactor and tow/run switch. Pull The mounting plate out of the cart.



later model carts have this rain guard on the plate that will have to be removed with a grinder.

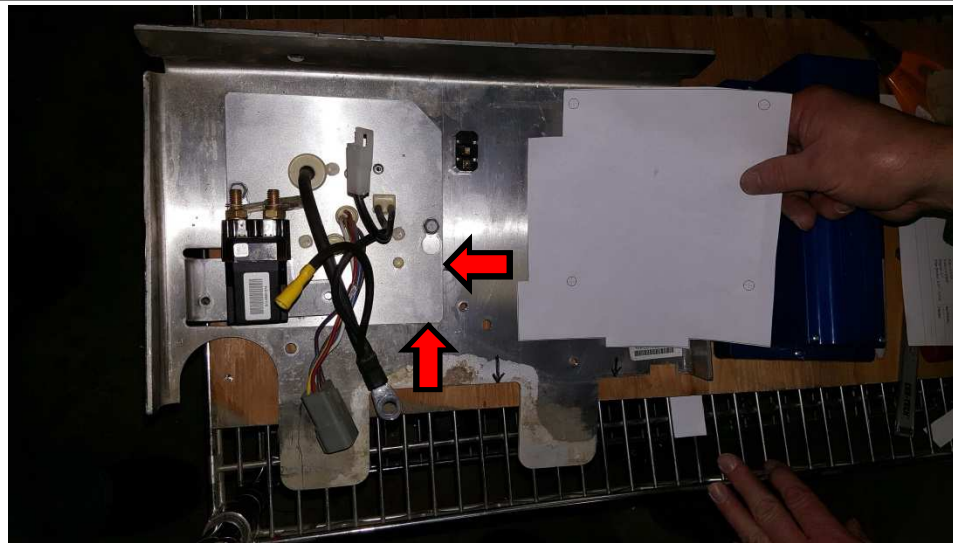


Step 6: Remove the stock controller from the mounting plate and cut out the template for the XCT controller.





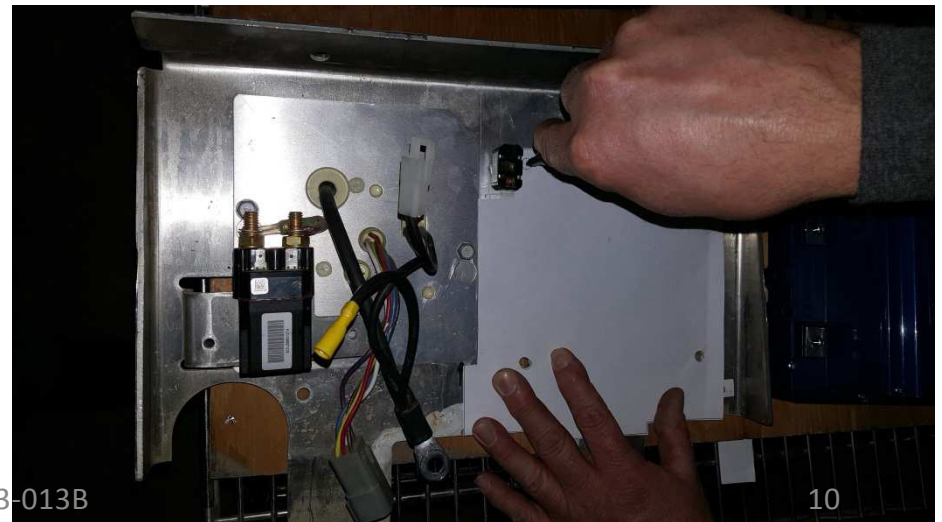
Step 7: Line up the template so that the left edge aligns with the edge of the OBC as shown in the picture.



Step 8: Use a punch tool to mark the 4 holes Through the template onto the adapter plate.



Doc 113-013B



10

## Step 9: Drill the marked holes



Doc 113-013B



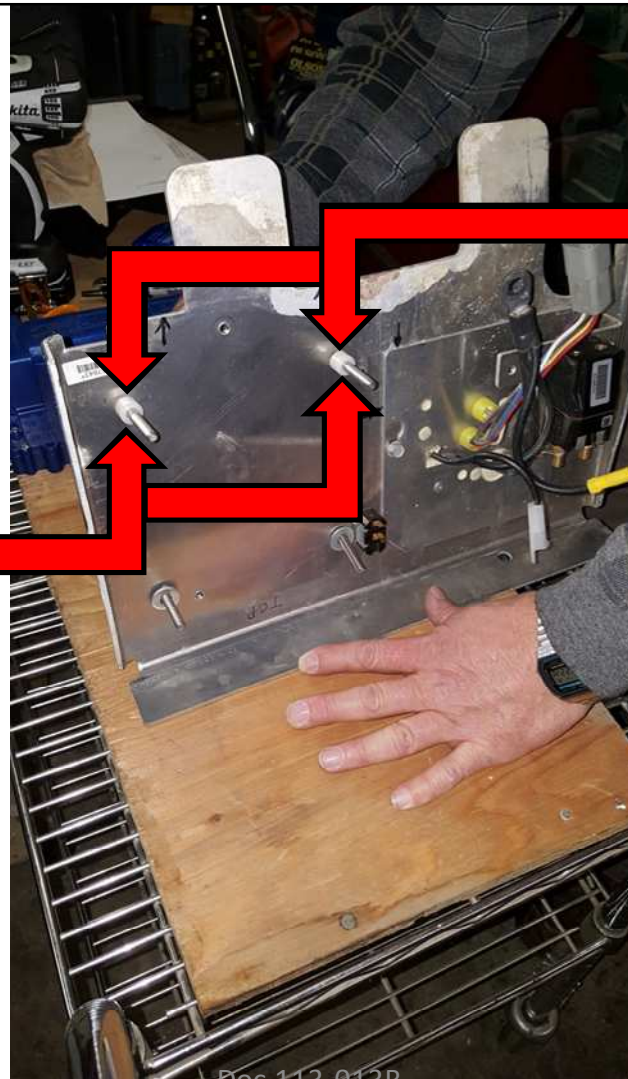
Step 11: Put the 2 flat washers onto the 2, ¼ x 20 x 2” bolts then push the bolts through the bottom 2 holes as shown. Then put the 2 Nylon Washer 375 on the bolts.



Flat Washer

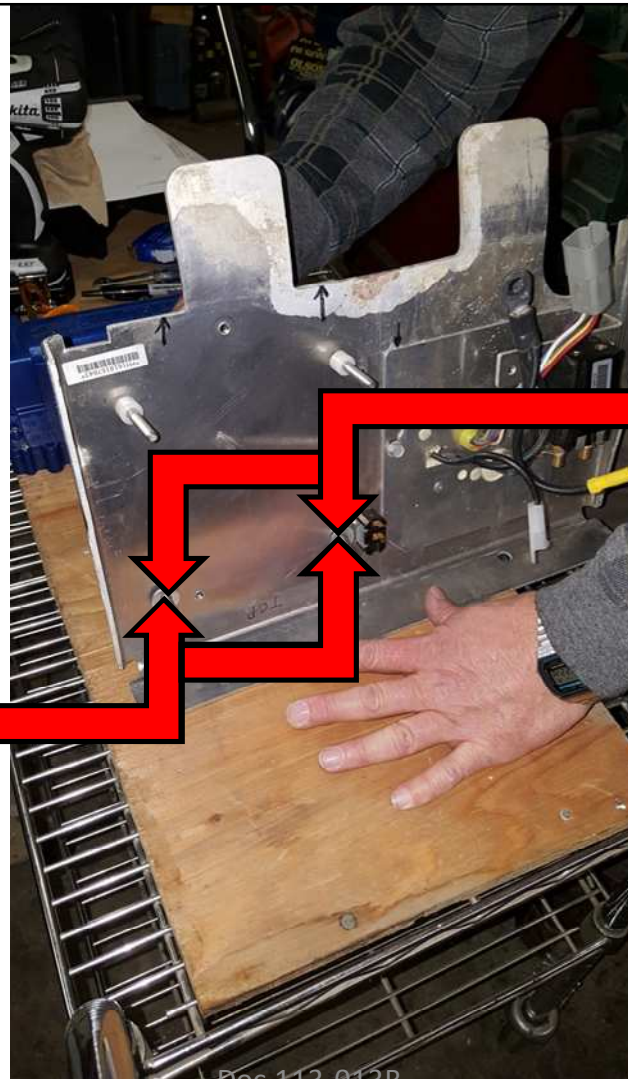
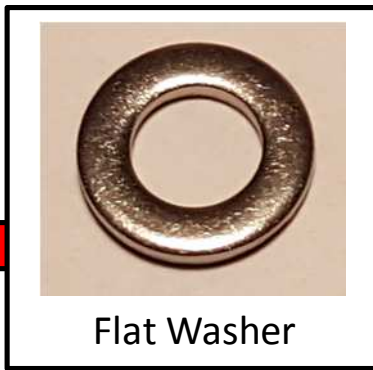


Bolt ¼ x 20 x 2”

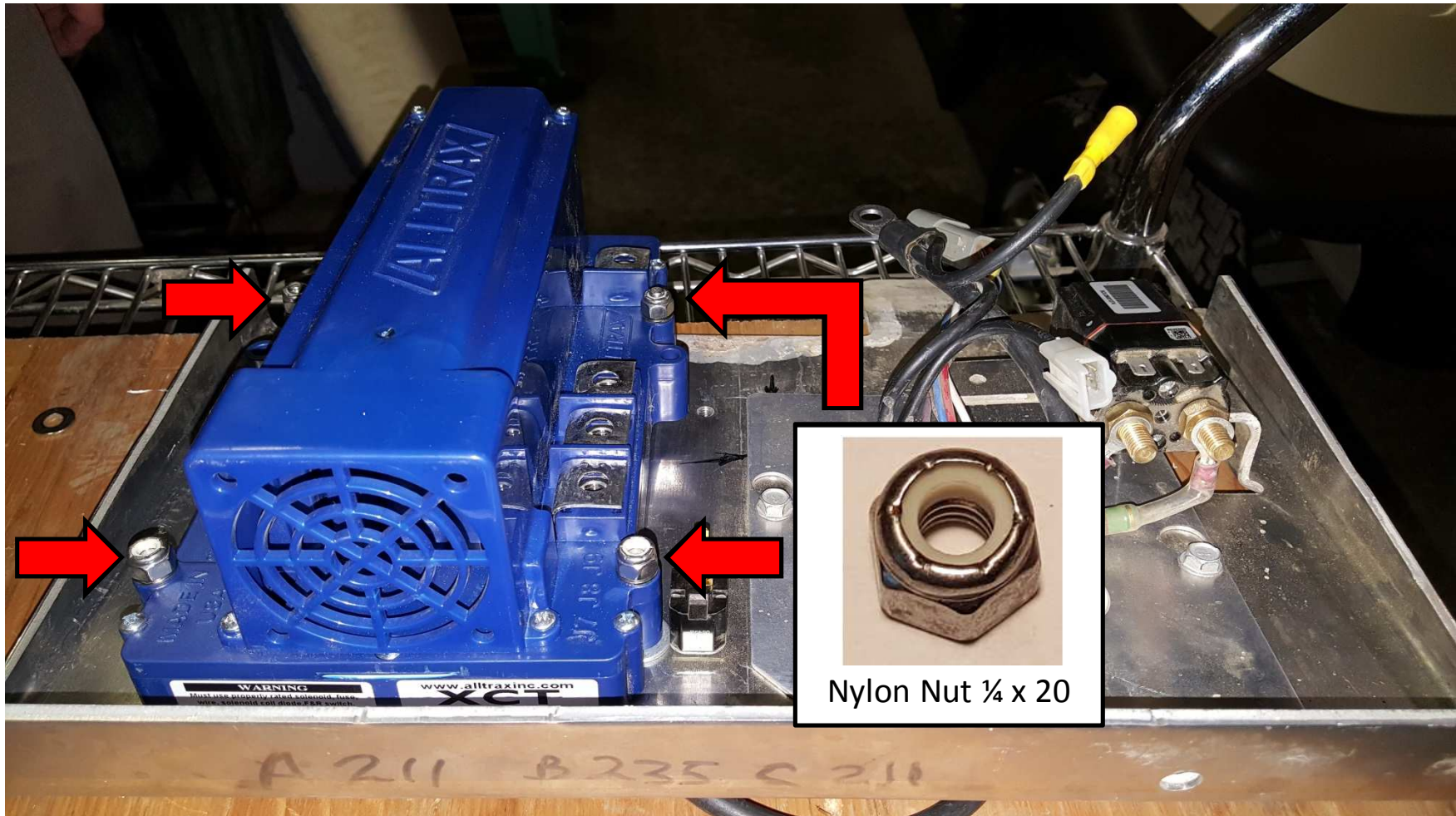


Nylon Washer 375

Step 12: Put 2 of the Flat washer's on the 2,  $\frac{1}{4}$  x 20 x 1.75" bolt's. Then push the bolts through the 2 top holes of the mounting plate as shown. Then put the 2 Nylon Washer 125 on the bolts.

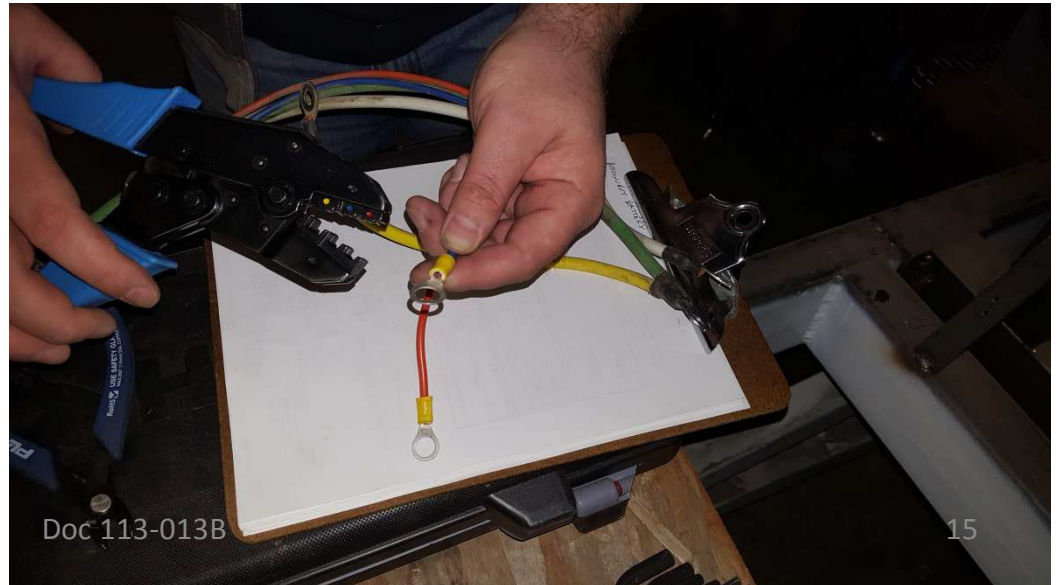
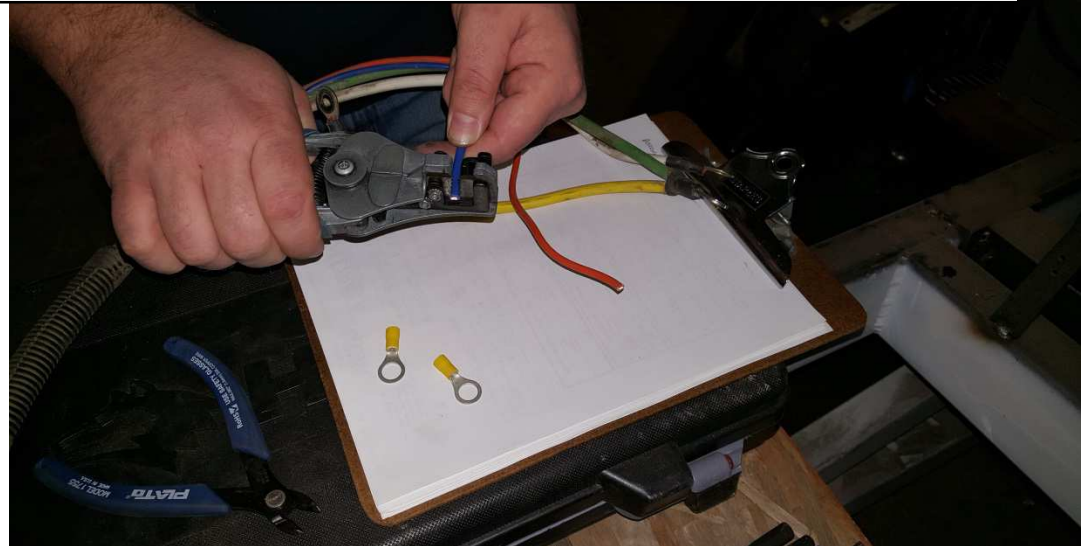
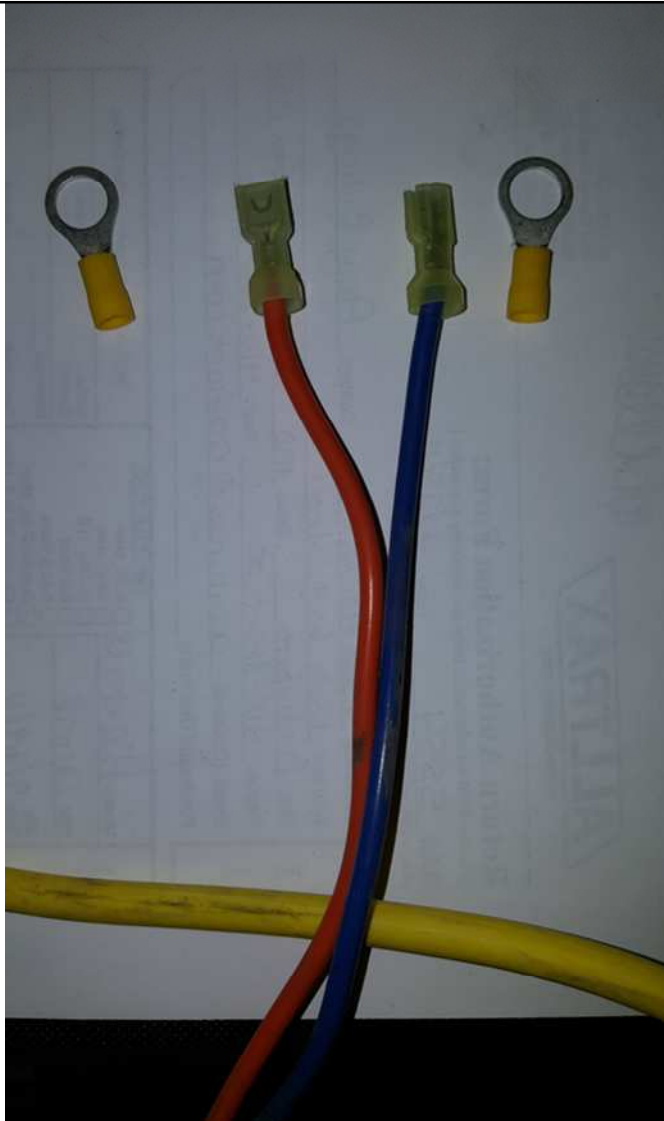


Step 13: Put the controller over the bolts and put the 4 nuts on the 4 bolts and tighten them up.





Step 14: Attach the supplied ring terminals to the blue and orange wires that went to the motor's F1 and F2 terminals.



Step 15: Cut the yellow wire attached to the green motor wire and tape off.

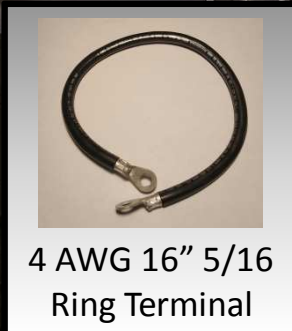
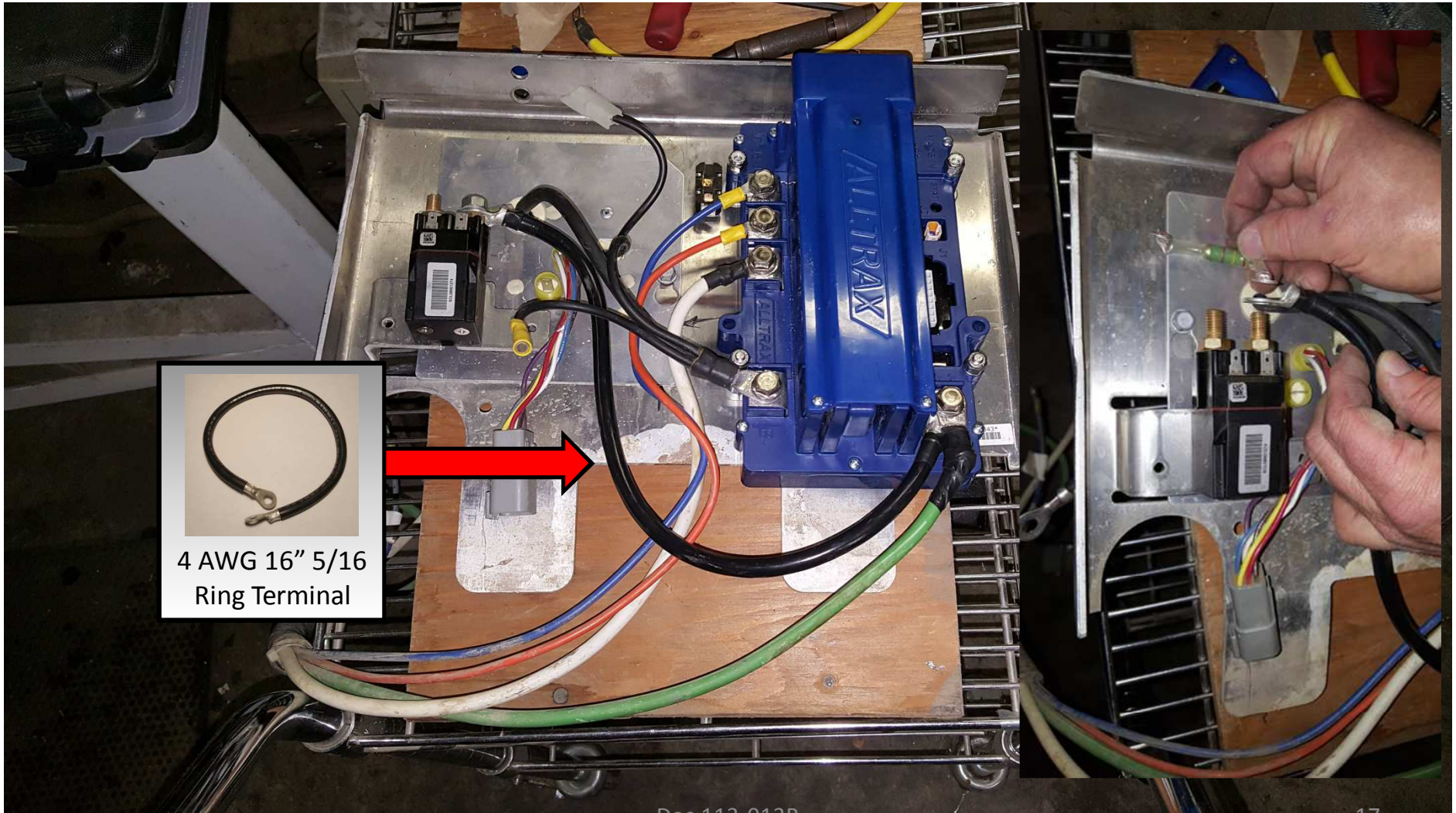


**Warning!**  
If using a 500 amp model controller you must upgrade the stock high current cables to 2 gauge throughout the cart. With the exception of the F1 and F2 wire's.





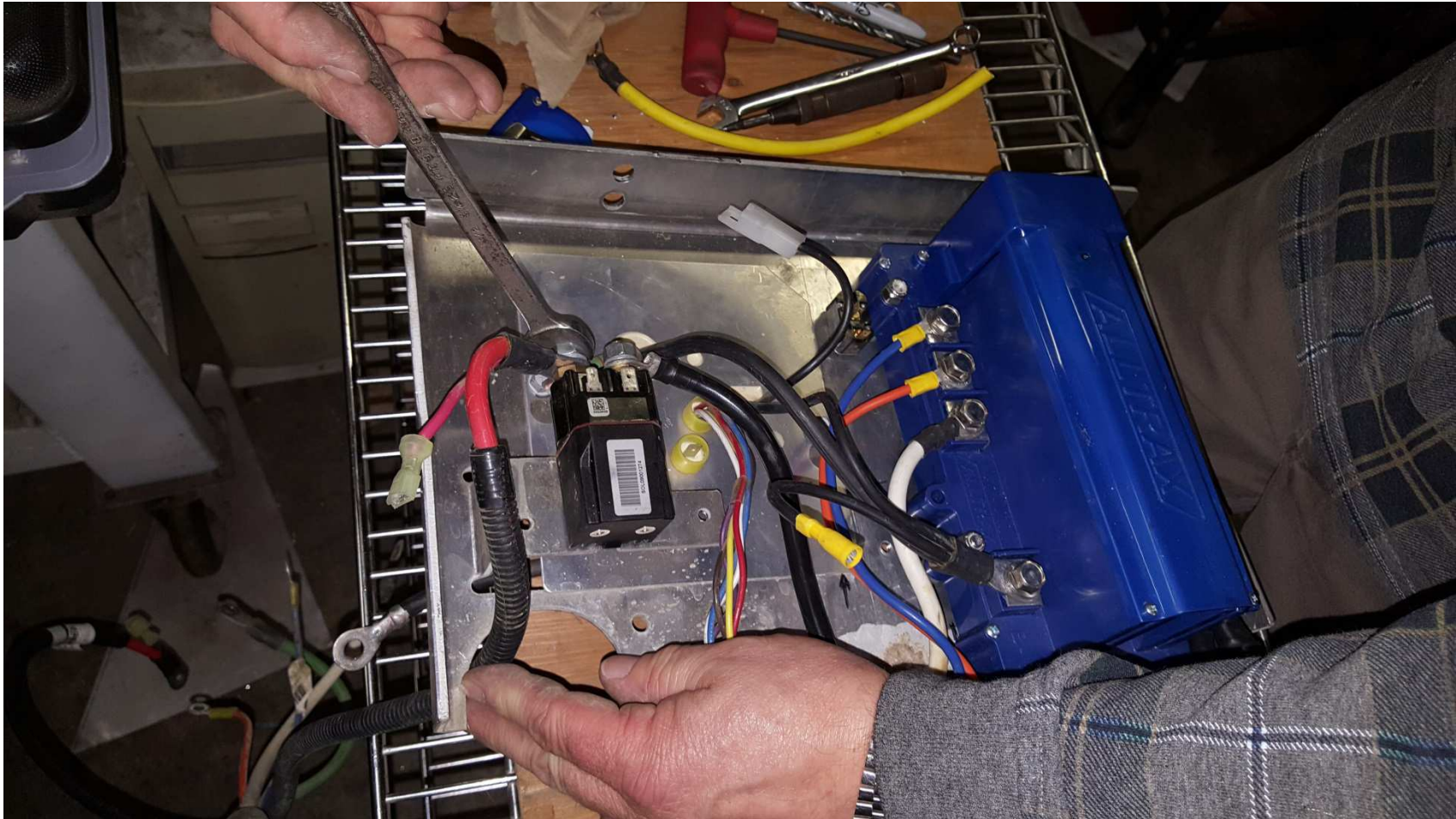
Step 16: Take the end of the green wire from the motor and the supplied 4 gauge wire and attach them to the B+ terminal of the controller. Attach the other end of the supplied 4 gauge wire to the solenoid as shown. Attach the Blue wire to J7 of the controller. Attach the orange wire to J8. Attach the white wire to J9.



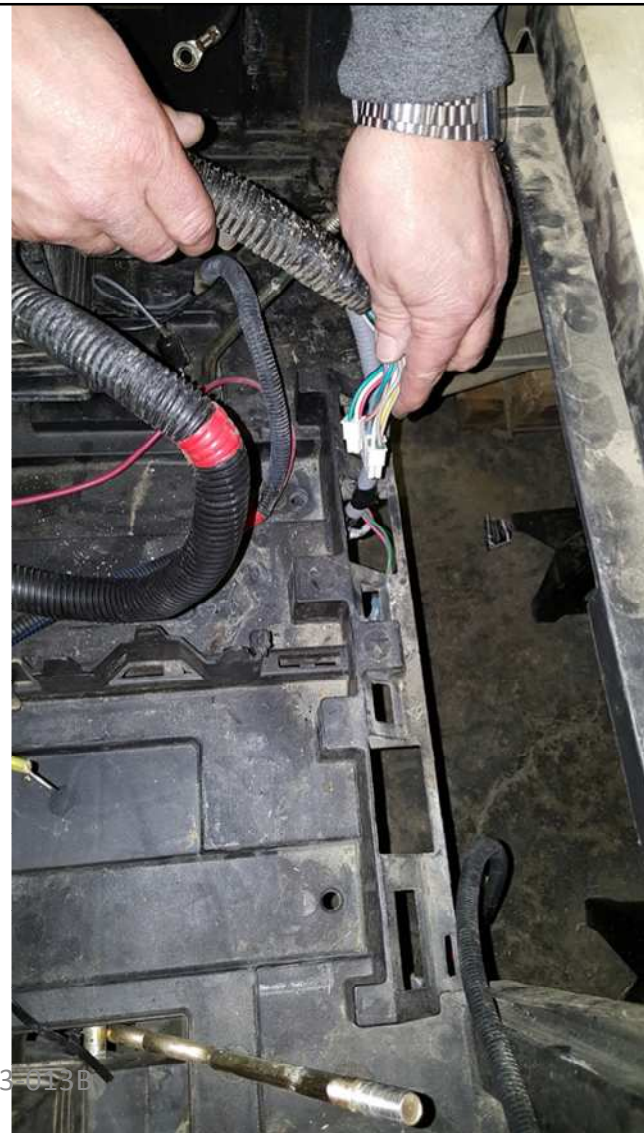
4 AWG 16" 5/16  
Ring Terminal



Step 17: Attach the Positive battery wire to the contactor and route through adapter plate as shown.

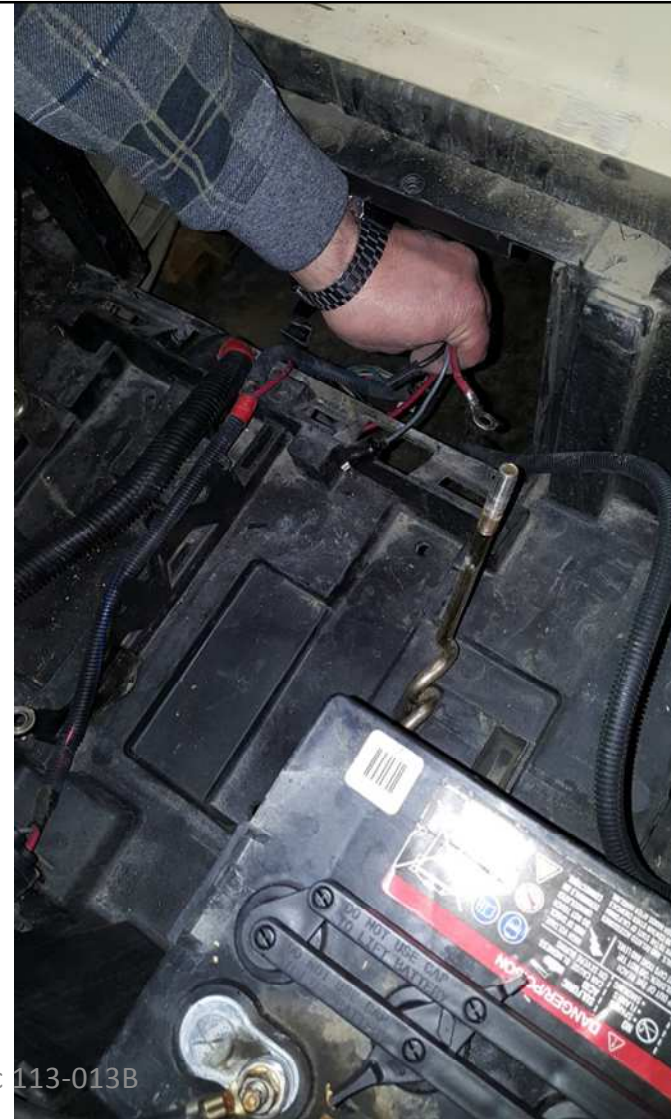
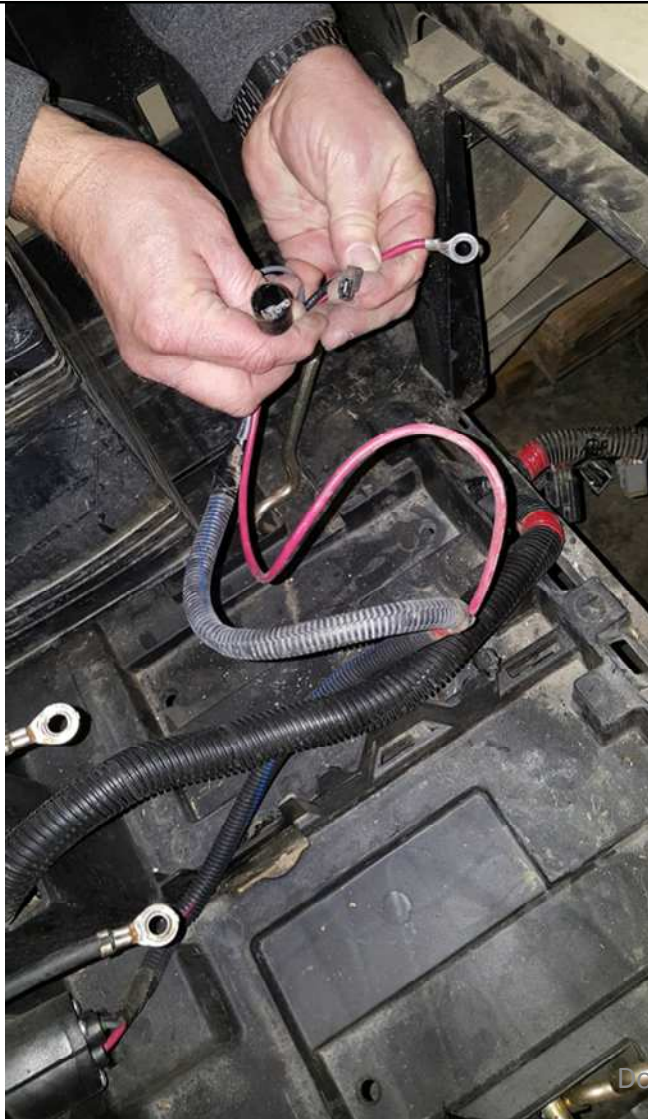


Step 18: Route the wire harness containing the 16 pin connector, 4 pin connector and OBC connector through the hole in the plastic battery tray as shown.



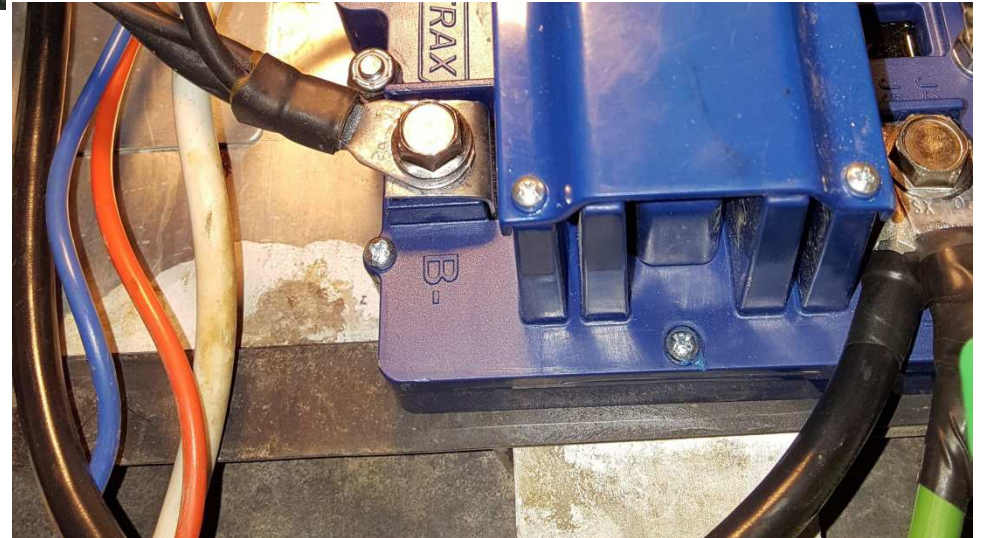


Step 19: Route the wire harness that contains the OBC, Tow/Run and charge port wire across the battery tray as shown.



Doc 113-013B

Step 20: Slide the adapter plate back into it's original position. The bottom lip of the plastic battery tray will fit between the controller and adapter plate as shown.

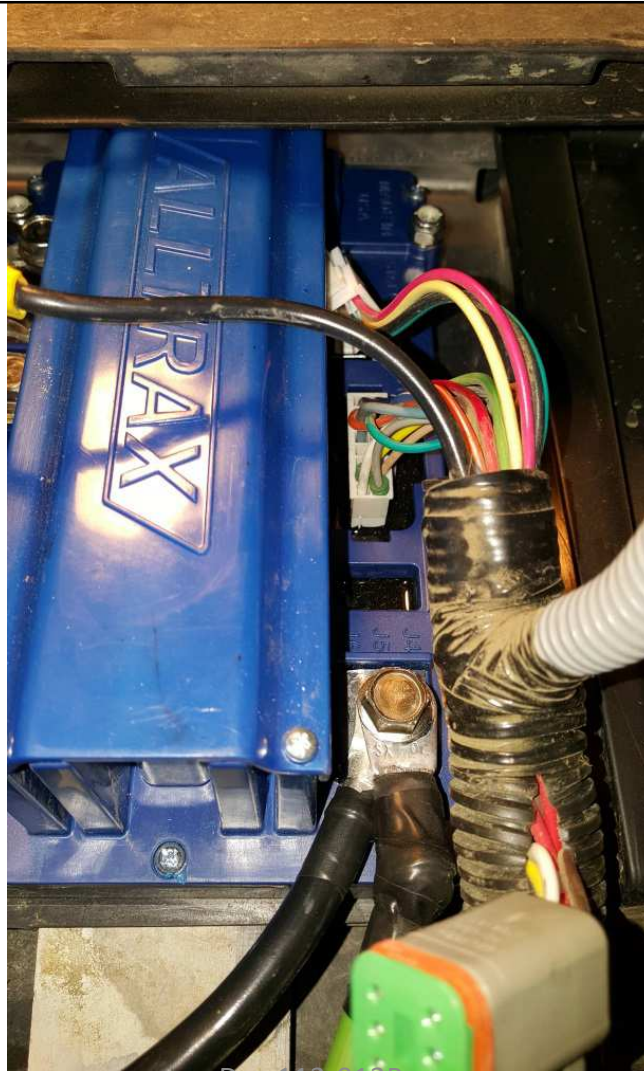




Step 21: Mark and drill a hole as shown for the star screw to allow clearance for the plastic cover to go back over the controller.



Step 22: Connect the 16 pin wire harness to the controller. The 4 pin plug is for the stock controller only.



Doc 113-013B



Step 23: Reconnect the OBC wire's, solenoid wire's and tow/run switch wire's.



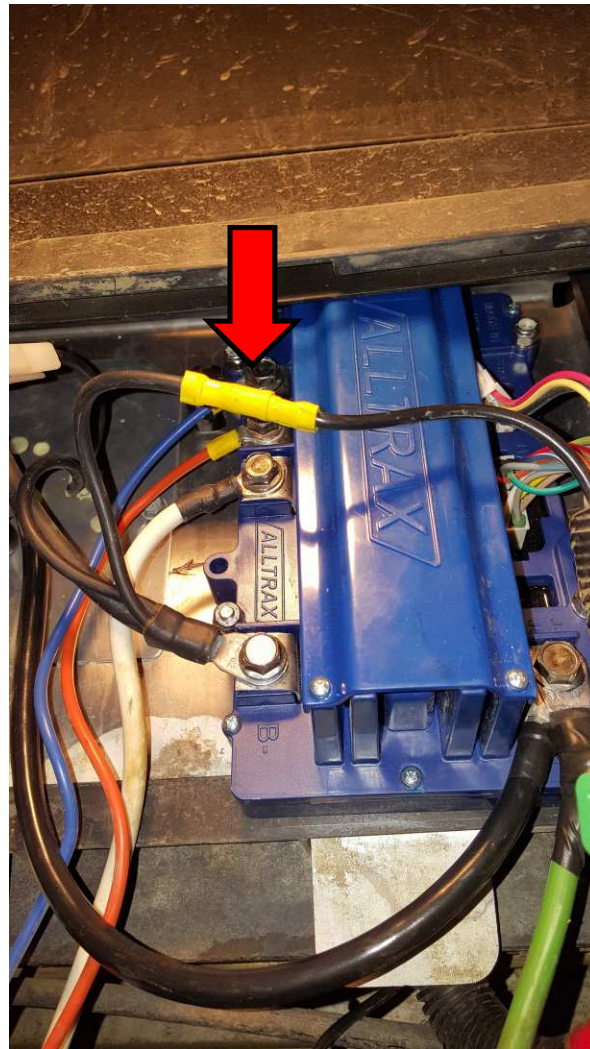
Blue/White and blue wire to contactor coil terminals.

Red and Green wires to tow/run switch

Contactor wire to harness



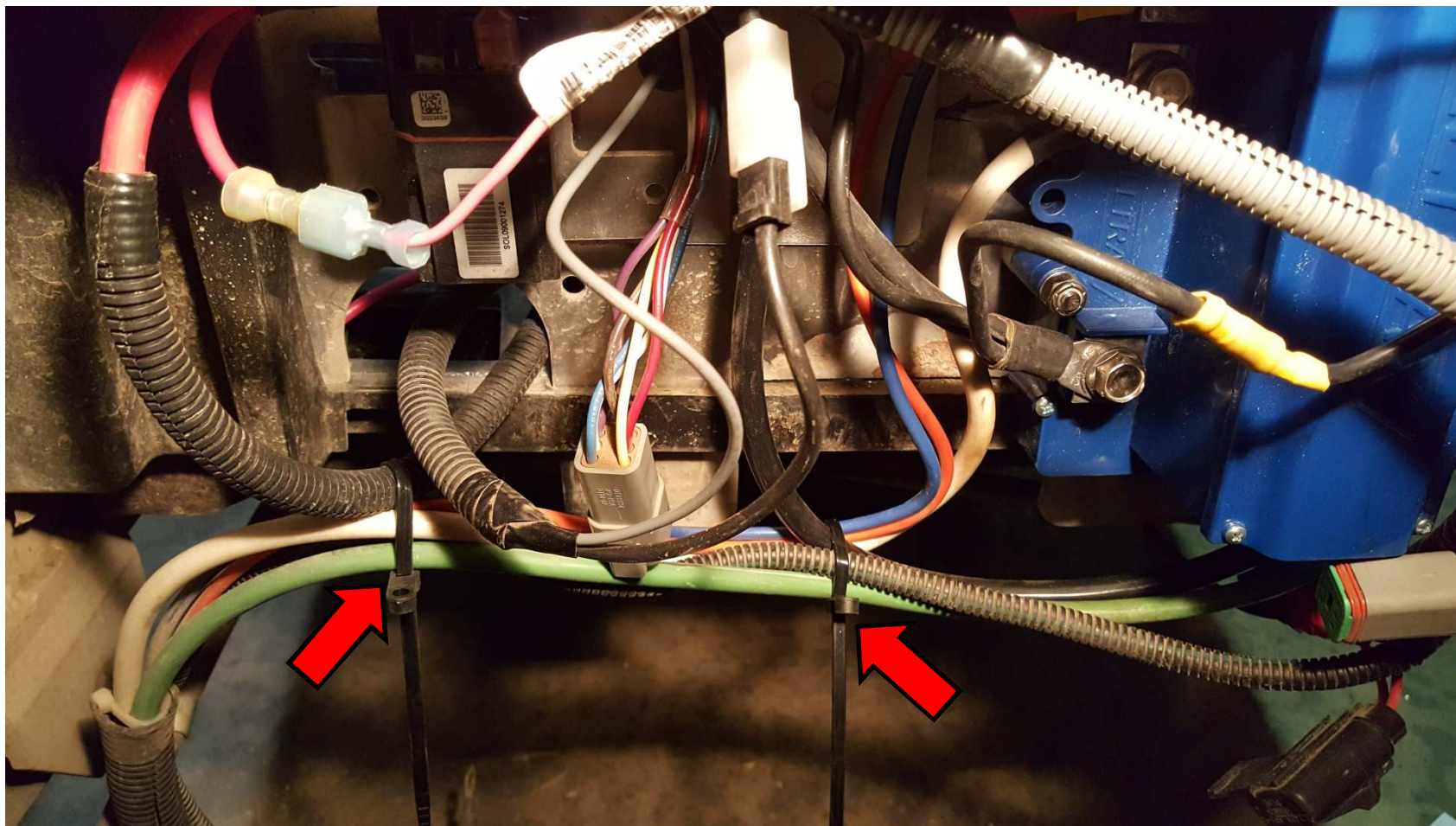
Step 24: Reconnect the black wire from the harness to the black B- wire as shown.



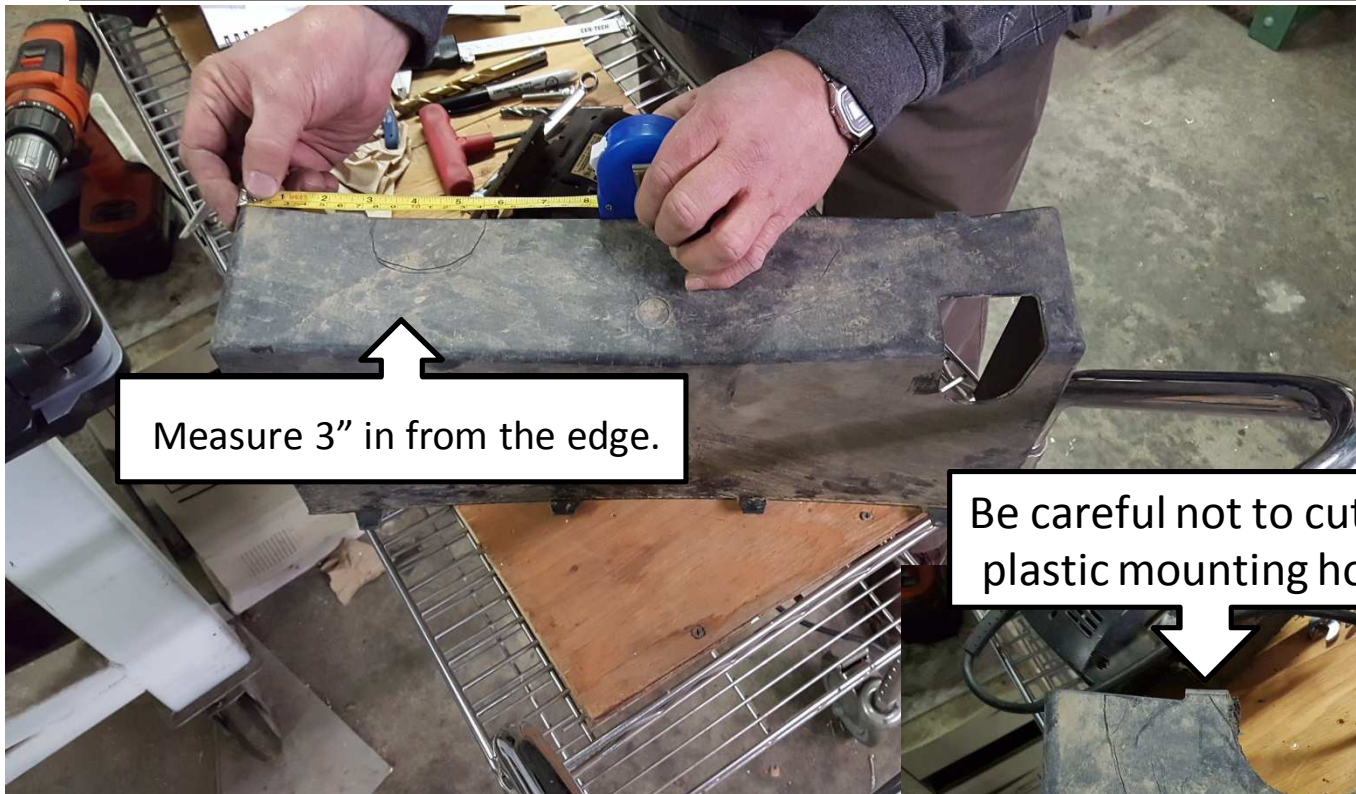
Doc 113-013B



Step 25: Zip tie the motor and speed sensor wires as shown.



Step 26: The plastic cover must be notched as show in order for the wires to pass through it.



Be careful not to cut the plastic mounting hook.





Step 27: Attach the OBC Jumper and put the plastic cover back on. The OBC jumper is not included in kits for later model carts with no on board computer.

