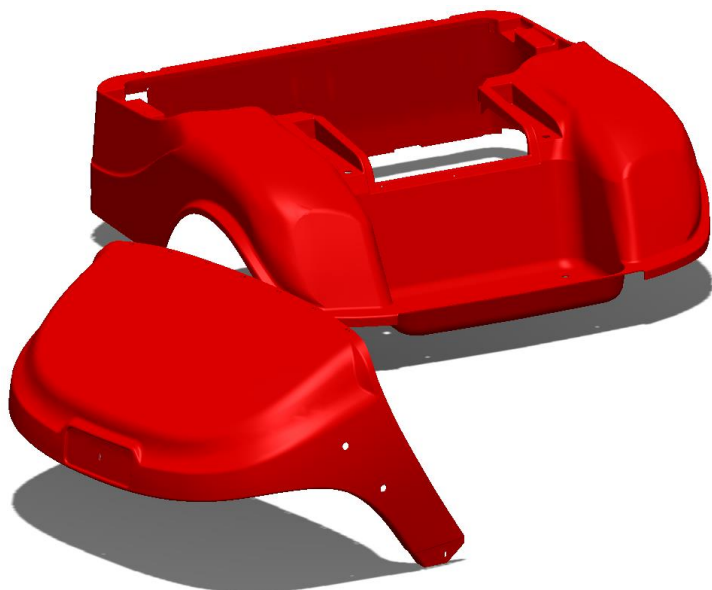


BOD-DT0012



Installation Instructions For E-Z-GO TXT

TABLE OF CONTENTS:

- Step 1** - Prebuild Car Prep
- Step 2** - Prepare and Install New Front Cowl
- Step 3** - Install New Rear Body
- Step 4** - Re-assembly

IMPORTANT: Do not fully tighten hardware until instructed. Read through all instructions before beginning installation.

Prior to servicing, turn the key switch OFF, remove the key, and place the Forward / Reverse handle in Neutral position. Block all wheels when servicing the vehicle.

Make sure all wiring and wire harnesses are properly routed and secure before any initial testing is done. Position all electrical components in areas that are protected from moisture and/or salt air.

ALL ELECTRIC VEHICLES:

To avoid unintentionally starting the vehicle, disconnect the batteries as shown on top right.

NOTE: For models with a TOW/RUN switch, place the switch in the TOW POSITION before disconnecting or connecting the battery cables.

ELECTRIC VEHICLES WITH SPEED

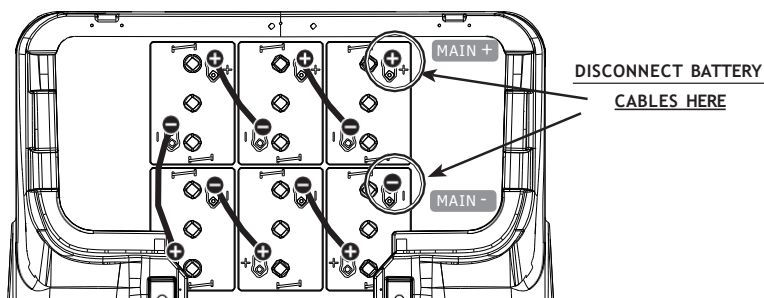
CONTROLLERS:

After disconnecting the batteries, discharge the controller capacitors as follows:

- Turn key to ON and place the forward/reverse handle in REVERSE.
- Slowly depress accelerator pedal and keep depressed until the reverse warning buzzer can no longer be heard. When buzzer stops sounding, the controller capacitors are discharged.

NOTE:

BODIES COME WITH A PROTECTIVE FILM. THIS FILM NEEDS TO BE REMOVED BEFORE FINAL INSTALLATION.



PREBUILD CAR PREP

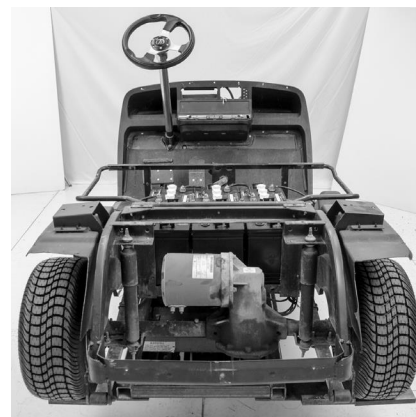
STEP

1

PREPARE CAR FOR INSTALLATION

Remove the following:

- Factory Top
- Front Frame
- Factory Top Rear Supports
- Windshield
- Sweater Basket
- Seat Back Supports
- Front Seat Bottom
- Front and Rear Colored Body Panels
- Side Rocker Panels
- Rear Bumper

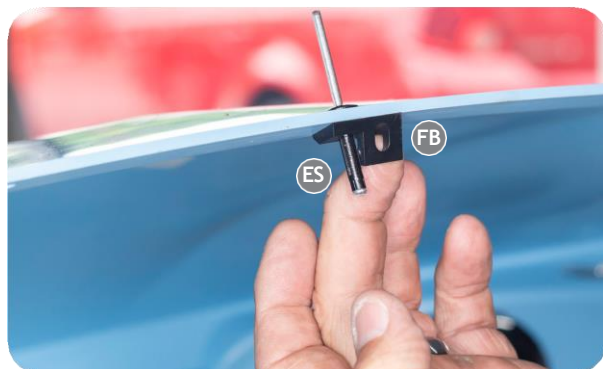
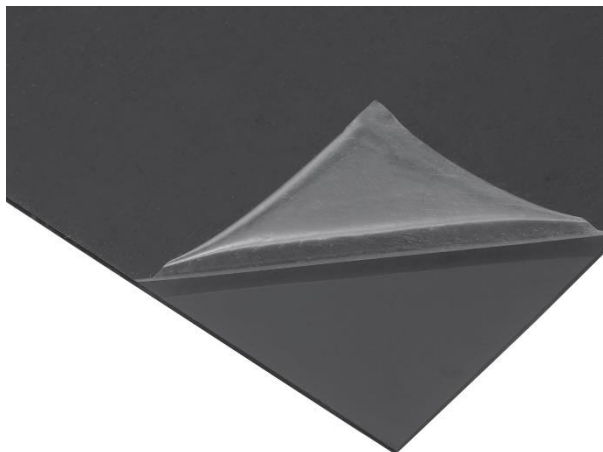


PREPARE AND INSTALL NEW FRONT COWEL.

STEP 2.1 INSTALL MOUNTING BRACKETS

• Peel back the protective film from Body around installation area. Use a few pieces of tape to hold the film out of the way during assembly.

• Insert Front Cowl Brackets (FB x7) under the Front Cowl, along the back top edge, using the pre-drilled holes. Attach the Brackets with Extra Small Rivets (ES x7) as shown. Repeat 7 times.



STEP 2.2 ATTACH COWL TO DASH FRAME

• Position Front Cowl along Dash Frame and align Front Cowl Brackets to holes in Dash Frame. Attach Cowl using Medium Rivets (SR x5).



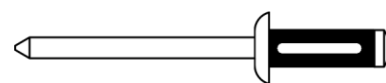
STEP 2.3 ATTACH COWL BOTTOM

• Attach the bottom of Cowl using a Small Rivet (SR x2). Repeat for opposite side.



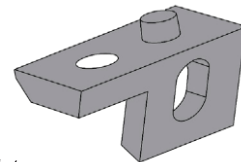
HARDWARE - SCALE 1:1

ES x7



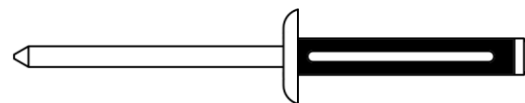
Extra Small Rivet

FB x7



Front Cowl Bracket

SR x7

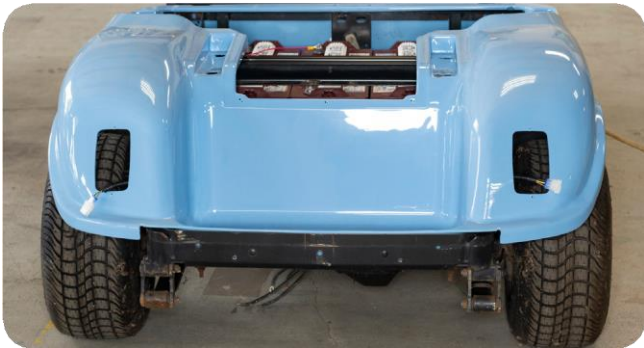


Small Rivet

INSTALL THE NEW REAR BODY

STEP 3.1 POSITION REAR BODY

- Place the Rear Body into position and make sure it is fully seated.
(*Note: Picture shows a body with optional taillight cutouts.)



STEP 3.2 RIVET REAR BODY TO FLOOR

- Remove the protective film from Body around installation area.
- Attach the Rear Body to floor using Small Rivets (**SR x4**).
(*Note: Optional Diamond Tread Kick Plate shown on Body)



STEP 3.3 REINSTALL FLOOR MAT

- Reinstall the Floor Mat over the Rear Body edge that is attached to floor.



STEP 3.4 RIVET BODY IN BAGWELL

- Remove the protective film from Body around installation area.
- Attach Body to Chassis in the Bagwell through the two smallest holes (Larger holes are for water drainage) using Small Rivets (**SR x2**).



STEP 3.5 INSTALL SIDE SUPPORT BRACKETS

- Remove the protective film from Body around installation area.
- Orient the Side Support Bracket so that it angles outward at the top. Use Small Rivets (**SR x4**) to attach Bracket to Chassis and to Rear Body.

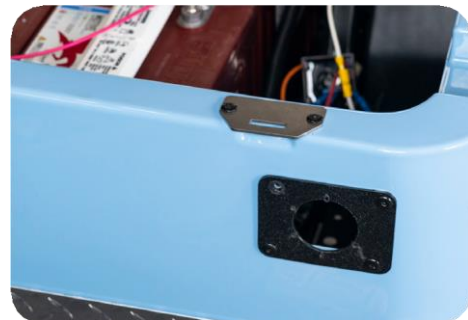


STEP

3.6

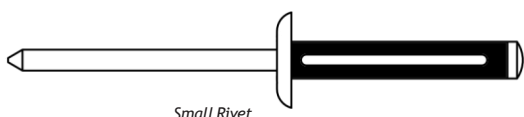
INSTALL CUSHION HINGES AND CHARGING RECEPTACLE

- Remove the protective film from Body around installation area.
- On the top front of the Rear Body there is a set of three holes on each side. Use the center hole of each set to attach the Body to the frame using Small Rivets (**SR x2**).
- Use the two remaining holes to install the Cushion Hinges using Small Rivets (**SR x4**).
- Reinstall the Charging Receptacle using Small Rivets (**SR x4**).



HARDWARE - SCALE 1:1

SR x20



Small Rivet

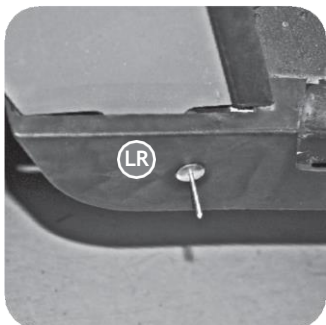
REASSEMBLY

STEP

4.0

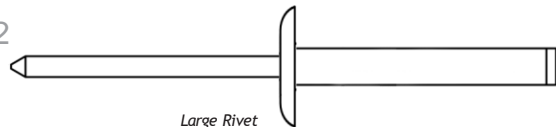
REASSEMBLE FACTORY PARTS

- Reinstall the Side Rocker Panels using Large Rivets (**LR x2**).
- If installing a Rear Seat Kit, follow the provided instructions and install now.
- Reinstall Rear Bumper (if not installing a Rear Seat Kit), Front Frames, Top, Seat Cushions.



HARDWARE - SCALE 1:1

LR x2



Large Rivet

