

REDHAWK

4 Passenger Stretch Bolt-on Kit, Electric PART #RH080CCPRBOE CLUB CAR - PRECEDENT INSTALLATION INSTRUCTIONS

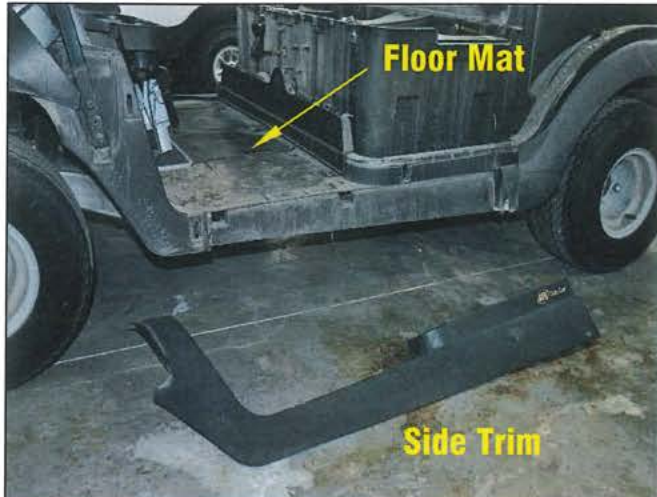


CAUTION
WEAR EYE
PROTECTION

TITLE: RH080CCPRBOE INSTALLATION INSTRUCTIONS		
DRAWN BY: R.H. Rev CN/JS	DATE: March 1, 2021	DWG NO. #7663-2
SHEET: 1 of 19	SCALE: Not To Scale	

Step 1. Tearing down your car.

Remove top and top supports.
Remove the seat bottom and the seat back.
Disconnect and remove batteries.
Remove the rear top basket assembly.
Remove the rear body cover.

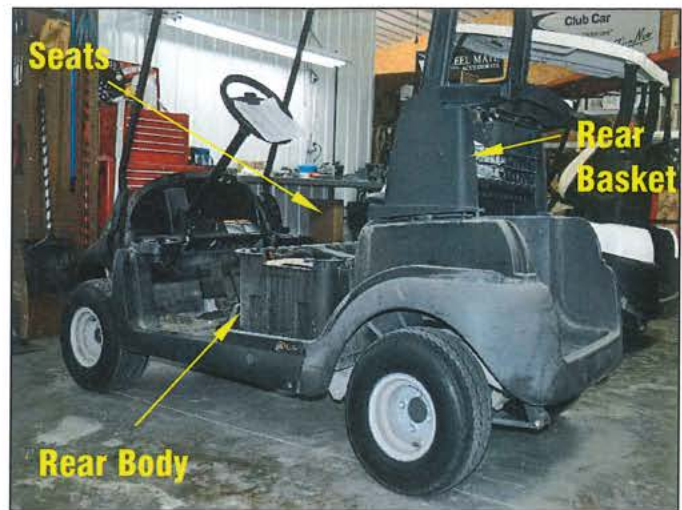


Remove the gas/brake floor panel cover.

Disconnect the wiring harness:

- Unhook the wires from the brake
 - Unhook the wires from the key switch.
- Pull back the entire wire harness to the battery box tub.

Remove brake rod.



Remove the side trim.
Remove the floor mat.



Disconnect the wiring from the rear motor.
Remove the battery box tub.

Remove the rear bumper/bag well assembly.
Remove the brake cables from the frame mount.

Remove the Front cowl from the car.
Remove the Steering Column.
Remove the plastic floor from the car.

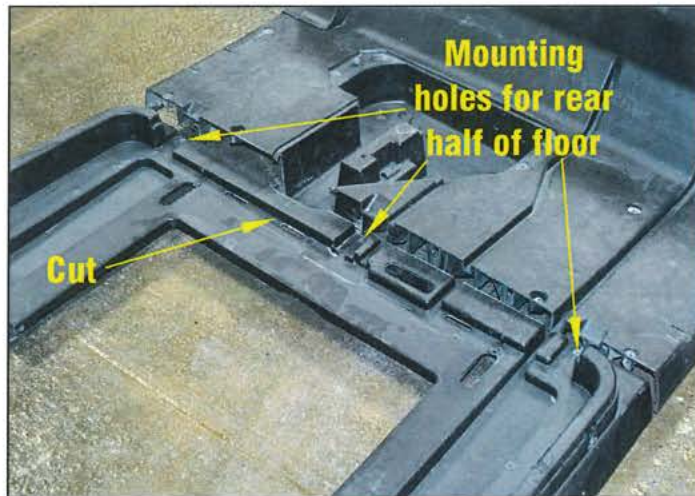
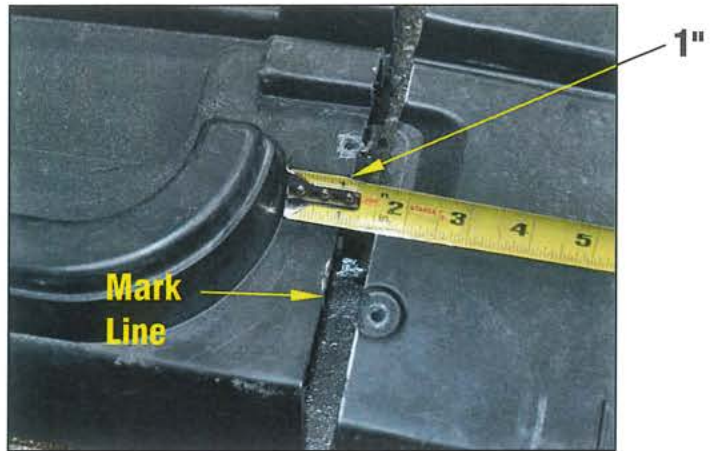
Clean chassis if needed.
Save all fasteners for later use.

TITLE:

RH080CCPRBOE INSTALLATION INSTRUCTIONS

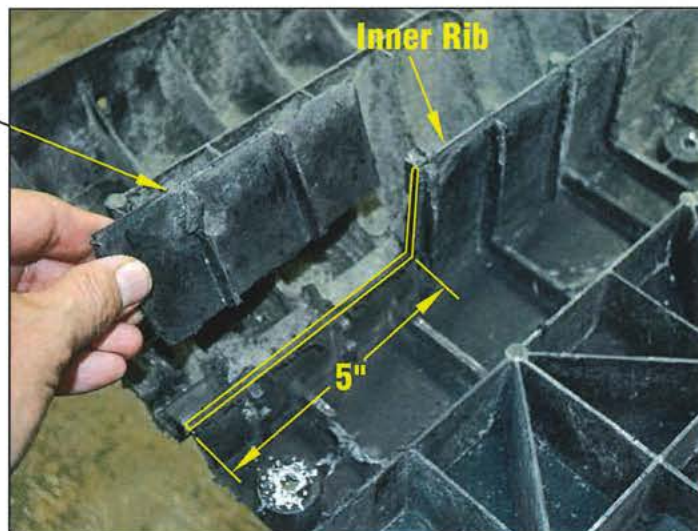
DRAWN BY: R.H. Rev CN/JS	DATE: March 1, 2021	DWG NO. #7663-2
SHEET: 2 of 19	SCALE: Not To Scale	

Step 2a. CRITICAL STEP - Cut plastic floor in half. Mark cutting line 1" in front of the curved edge as shown.



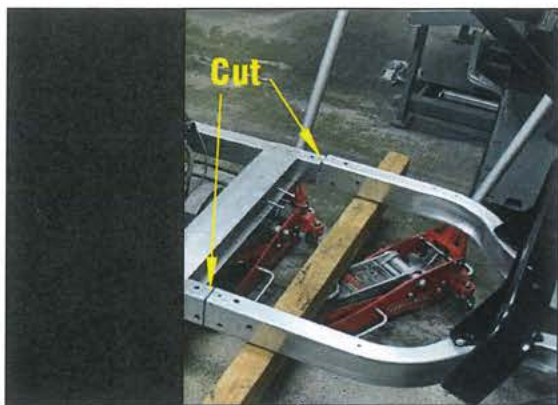
**Remove Rib
(both sides)**

Step 2b. Under front half of floor, cut out 5" of inner rib down to wire channels on BOTH SIDES.

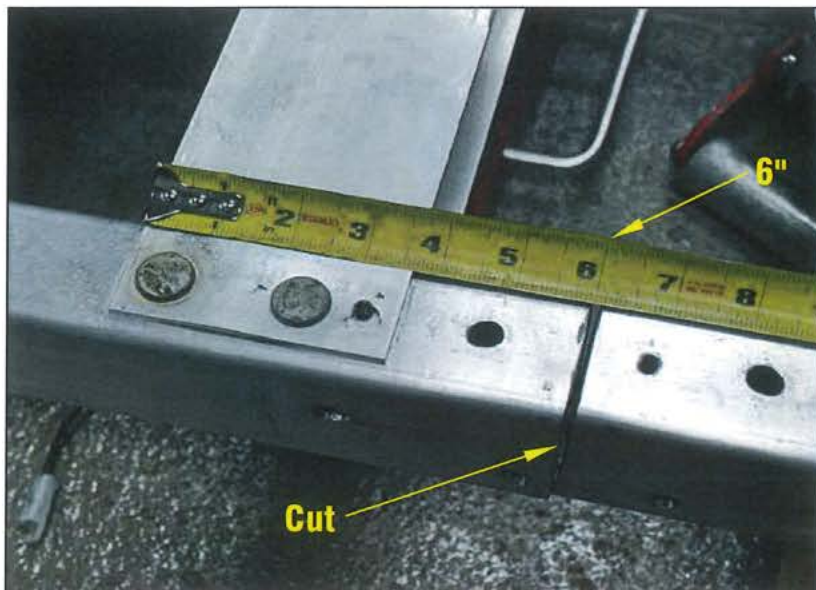


TITLE:		
RH080CCPRBOE INSTALLATION INSTRUCTIONS		
DRAWN BY: R.H. Rev CN/JS	DATE: March 1, 2021	DWG NO. #7663-2
SHEET: 3 of 19	SCALE: Not To Scale	

Step 3. CRITICAL STEP - Mark 6" back on frame as shown. Carefully cut frame in two. Be sure to make the cut square with the frame. Support the frame with floor jacks.



The rear of the car is now separated from the front.



Front of Car



Step 4. Pull the cart in half, and place each side onto a jack stand to hold each side up. Grind down smooth each frame rail, were it was cut in half.



TITLE:		
RH080CCPRBOE INSTALLATION INSTRUCTIONS		
DRAWN BY: R.H. Rev CN/JS	DATE: March 1, 2021	DWG NO. #7663-2
SHEET: 4 of 19	SCALE: Not To Scale	

Lubricate all fasteners.

Step 5. Slide Driver and Passenger extension rails (Part #6597) onto rear frame until they stop. The inside of the extension goes inside the factory channel. Be sure that the extensions are straight and level with the frame. Use holes in the extensions as guides and drill two (2) $\frac{3}{8}$ " holes through the factory channel from the top (Location "A"). Insert two (2) $\frac{3}{8}$ " x 4" hex head bolts, four (4) $\frac{3}{8}$ " flat washers and two (2) $\frac{3}{8}$ " lock nuts. Do not tighten.

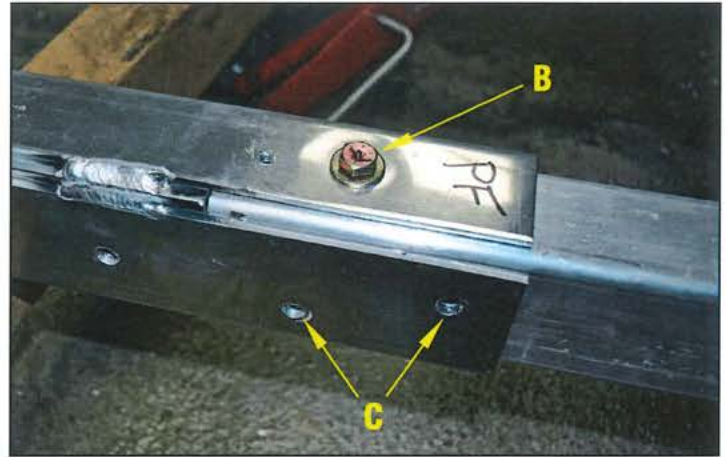
D = Driver
DF = Driver Front
DR = Driver Rear

P = Passenger
PF = Passenger Front
PR = Passenger Rear



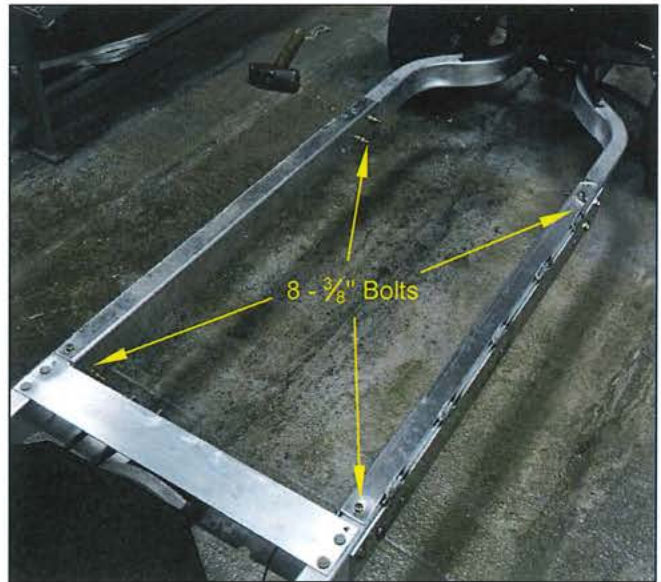
BRAKE CABLES

Step 6. Insert front frame into frame extensions until the frame contacts the inner tube of the extension. Be sure that the extensions are straight and level with the frame. Use holes in the extensions as guides and drill two (2) $\frac{3}{8}$ " holes through the factory channel from the top (Location "B"). Insert two (2) $\frac{3}{8}$ " x 4" hex head bolts, four (4) $\frac{3}{8}$ " flat washers and two (2) $\frac{3}{8}$ " lock nuts. Do not tighten.



Step 7. Square the frame using diagonal measurements. Drill eight (8) $\frac{3}{8}$ " holes through front and rear frames using holes in extensions as guides (Location "C" typical). Insert eight (8) $\frac{3}{8}$ " x $3\frac{1}{2}$ " bolts, sixteen (16) $\frac{3}{8}$ " flat washers and eight (8) $\frac{3}{8}$ " lock nuts into holes. With frame square, tighten all twelve (12) $\frac{3}{8}$ " bolts.

Remove jacks and stands.



TITLE:

RH080CCPRBOE INSTALLATION INSTRUCTIONS

DRAWN BY:

R.H. Rev CN/JS

SHEET:

5 of 19

DATE:

March 1, 2021

SCALE:

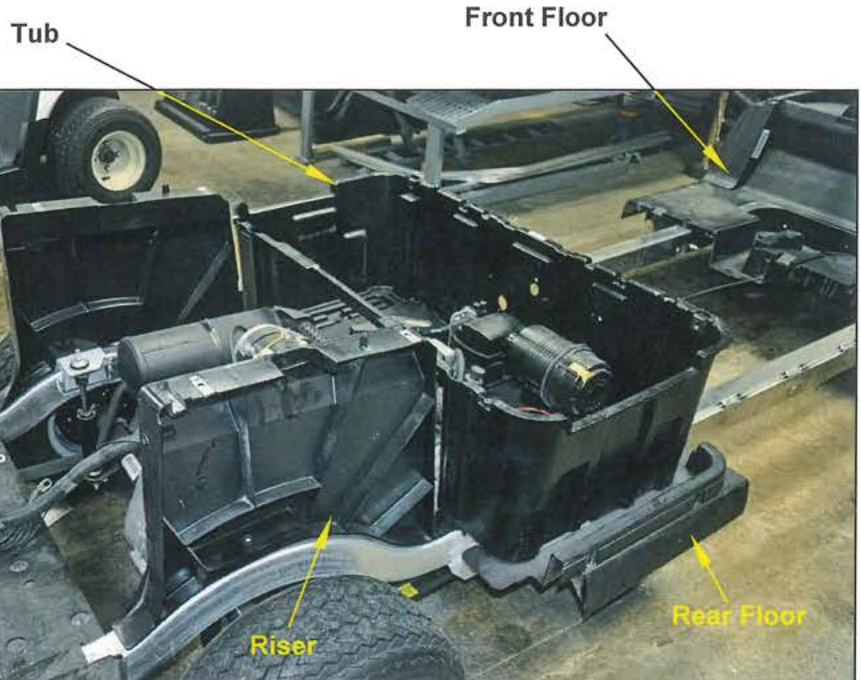
Not To Scale

DWG NO.

#7663-2

Step 8. Replace plastic floors. Be sure that floors clear bolt heads from frame extensions. Line up factory mounting holes (3 for front and 3 for rear) and secure front floor with factory bolts.

Step 9. Replace steering wheel.



Step 10. Replace rear risers to original positions. Do not attach at this time.

Step 11. Secure tub to frame with four (4) original self tapping screws.

Step 12. Sit the middle sub-floor (Part #6582) between the frame extensions with the 1½" hole located at the front of the passenger side. Insert six (6) 5/16" x 3½" bolts and six (6) 5/16" flat washers from the inside of the frame extensions.



#6582

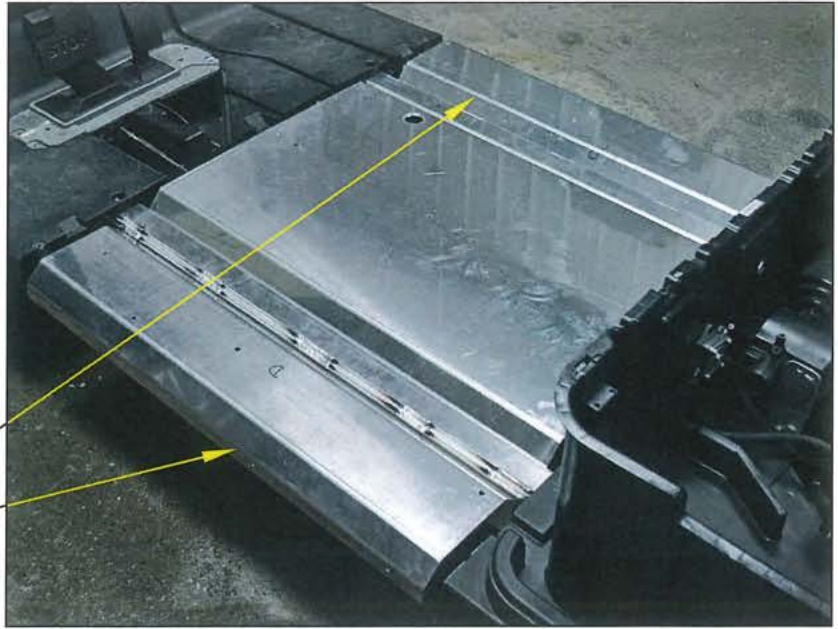
5/16" bolts used to secure outer sub-floor



TITLE:		
RH080CCPRBOE INSTALLATION INSTRUCTIONS		
DRAWN BY: R.H. Rev CN/JS	DATE: March 1, 2021	DWG NO. #7663-2
SHEET: 6 of 19	SCALE: Not To Scale	

Step 13. Secure the outer sub-floors (Part #6583 D&P) to the frame extensions with six (6) $\frac{5}{16}$ " flat washers and six (6) $\frac{5}{16}$ " lock nuts.

#6583



Step 14. Install factory brake equalizer and new brake rod (Part #6564). Run brake rod through brake rod guide under middle sub-floor to pedal location at front of car.



TITLE:

**RH080CCPRBOE
INSTALLATION INSTRUCTIONS**

DRAWN BY:

R.H. Rev CN/JS

DATE:

March 1, 2021

DWG NO.

#7663-2

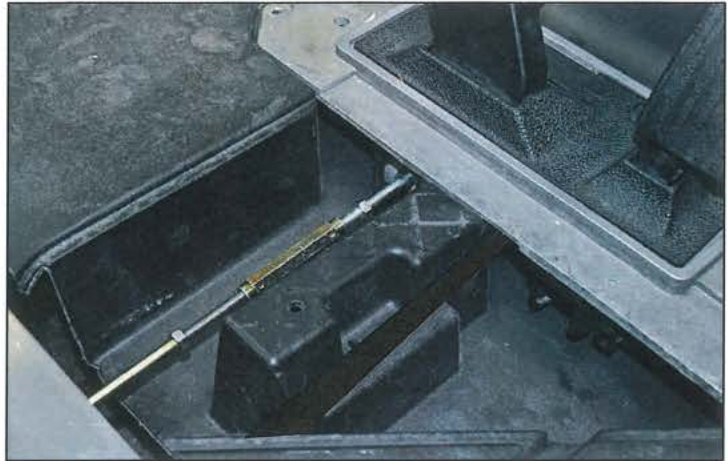
SHEET:

7 of 19

SCALE:

Not To Scale

Step 15. Connect brake rod to pedal . Install brake/accelerator pedal assembly on front floor. Adjust as needed. Brake pedal should have about 1" of play when properly adjusted.



Step 16. Snap bagwell in place (do not secure at this time). Run factory brake light wires to rear of car and clip in place.



TITLE:

**RH080CCPRBOE
INSTALLATION INSTRUCTIONS**

DRAWN BY:

R.H. Rev CN/JS

DATE:

March 1, 2021

DWG NO.

#7663-2

SHEET:

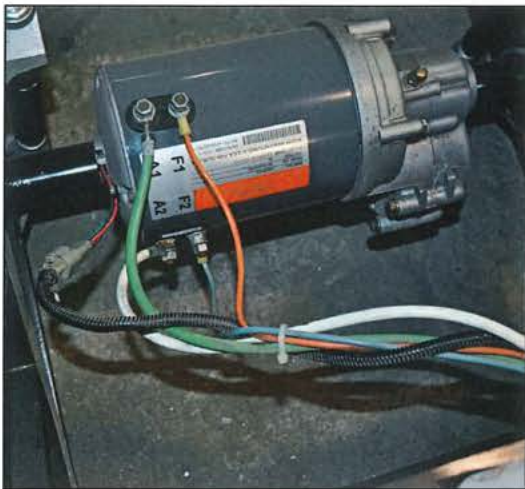
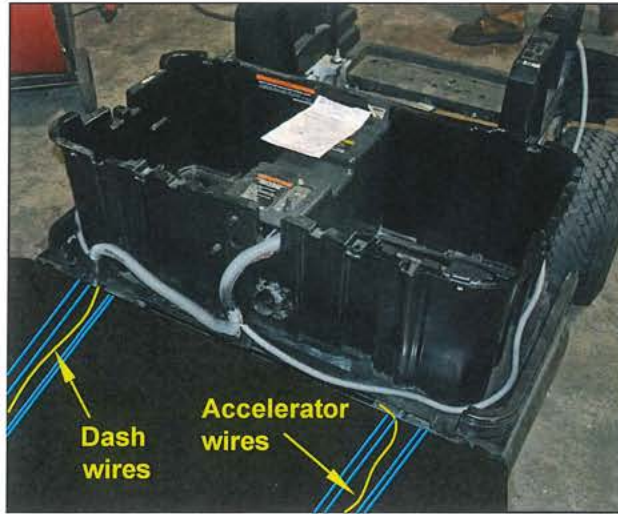
8 of 19

SCALE:

Not To Scale

Step 17. Install the (3) wire extensions kits.

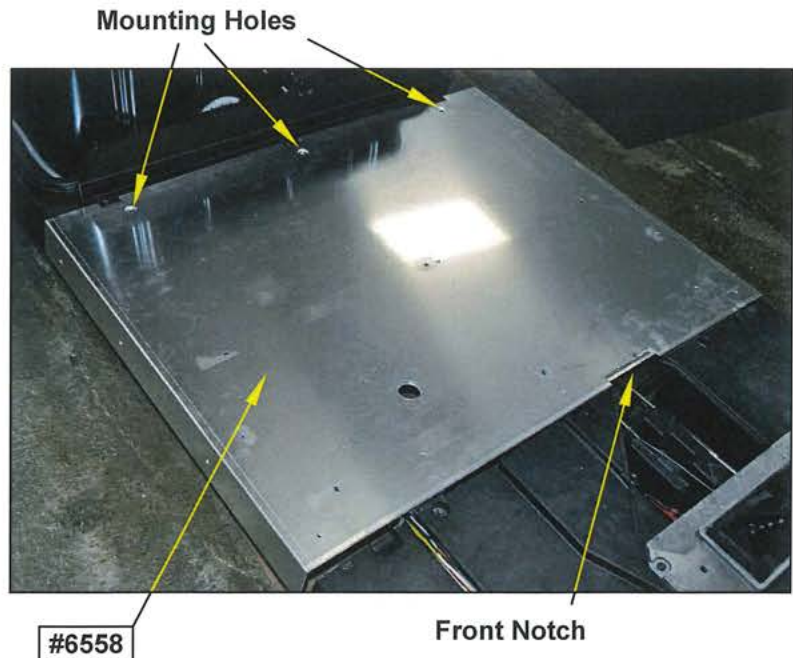
Start from the rear of the car and plug in the Dash wireharness (Part #PA1606). Place OEM wire harness and connection plugs inside tub of car. Run wire harness on the passenger side of the car on top of the frame in the channel. Plug in the Accelerator wireharness (Part #PA1607), run on the driver side of the car on top of the frame in the channel. Plug in the FNR wireharness (Part #PA1608), run under the frame and up the hole in the middle frame on passenger side. Run all wireharness kits back to there OEM positions.



Step 18. Feed wire bundles through factory plastic and down channels and install wire looms. Wrap wire bundles with electrical tape from end of loom to butt connectors.

Step 19. If you removed your wires on the motor, hook them back up to motor.

Step 20. Install floor (Part #6558) with front notch lined up with accel./brake access panel. The three (3) notches at the rear line up with the tabs on the rear molding. Drill three (3) $1\frac{1}{32}$ " holes through sub-floor using holes at rear as guides. Secure floor with three (3) $\frac{5}{16}$ " x 1" truss head bolts, three (3) $\frac{5}{16}$ " flat washers and three (3) $\frac{5}{16}$ " lock nuts.



TITLE: RH080CCPRBOE INSTALLATION INSTRUCTIONS		
DRAWN BY: R.H. Rev CN/JS	DATE: March 1, 2021	DWG NO. #7663-2
SHEET: 9 of 19	SCALE: Not To Scale	

Step 21. Sit batteries back in place.
Secure with factory fasteners.
Do not connect the batteries at this time.

Step 22. Hook the acellarator wires up.
Install cover to access panel in front floor with original plastic plug.



Step 23. Install two (2) 6" kick trim pieces (Part#5988) centered over gap between new floor and front plastic floor.

Step 24. Install floor mat (Part #7080).
Center side to side and tuck under rear molding.
Cut 1½" hole in mat for FNR cable and wires using hole in the floor as a guide.



TITLE:

**RH080CCPRBOE
INSTALLATION INSTRUCTIONS**

DRAWN BY:

R.H. Rev CN/JS

DATE:

March 1, 2021

DWG NO.

#7663-2

SHEET:

10 of 19

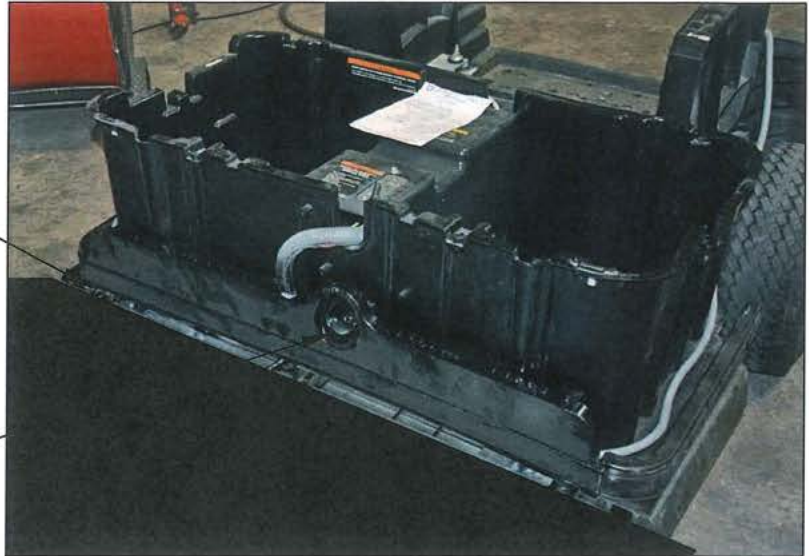
SCALE:

Not To Scale

Step 25. Place rear molding in position and Secure rear molding with three (3) original self tapping screws.

The tabs on the back of the molding should touch the tub.

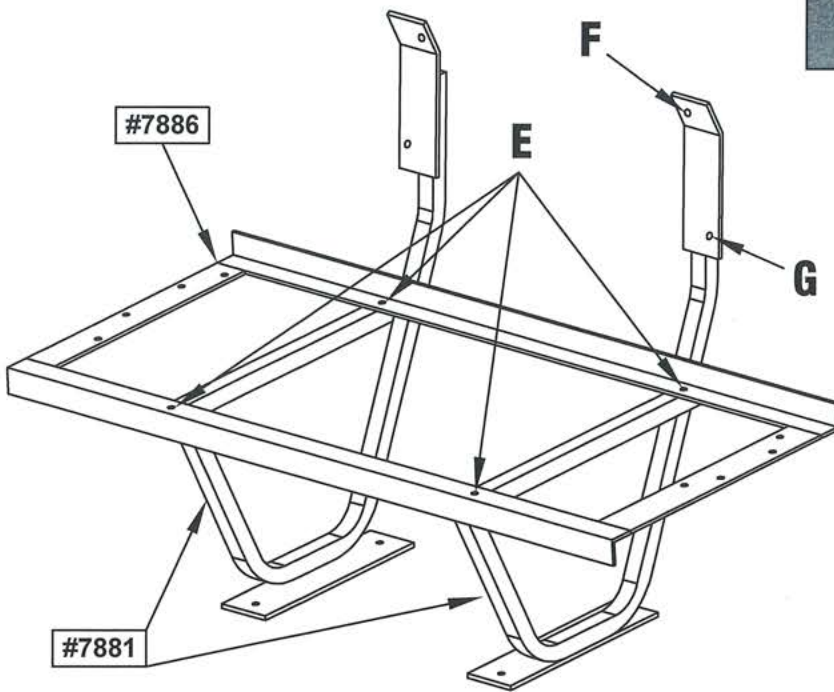
Step 26. Snap collar around battery charger connector.



Step 27. Install front floor mat. Feed wire harness up to glove box and push up against front cowl.



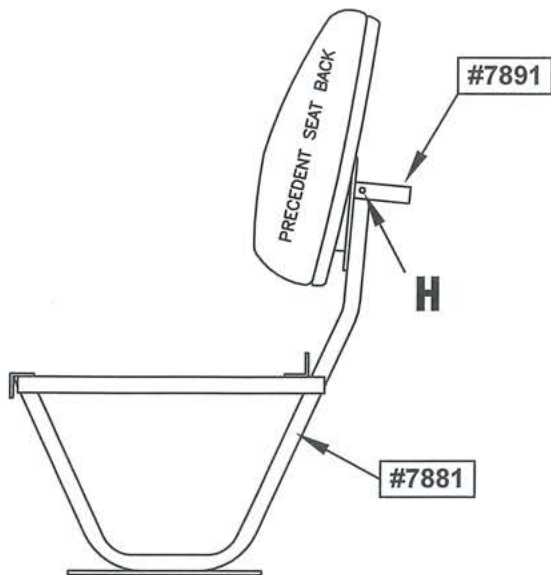
wire harness



Step 28. Bolt together the middle pod. Secure the seat hat rack (Part #7886) to each seat support side post (Part #7881) at (Location E) using:
 (4)- $\frac{5}{16}$ " x $1\frac{3}{4}$ " truss head bolts,
 (4)- $\frac{5}{16}$ " locknuts.

Step 29. Secure the seat back to each seat support side post (Part #7881) at top (Location F) using:
 (2)- 6mm x 25mm hex head bolts,
 (2)- $\frac{1}{4}$ " flatwashers.
 Secure seat back at bottom (Location G) using:
 (2)- $\frac{1}{4}$ " x $1\frac{1}{4}$ " pan head sheet metal screws,
 (2)- $\frac{1}{4}$ " flatwashers.

TITLE:		
RH080CCPRBOE INSTALLATION INSTRUCTIONS		
DRAWN BY: R.H. Rev CN/JS	DATE: March 1, 2021	DWG NO. #7663-2
SHEET: 11 of 19	SCALE: Not To Scale	



Step 30.

Secure the seat back grab handle (Part #7891) to each seat support side post (Part #7881) on the outside of the seat post tubes at (Location H) with:

- (2)- 1/4" x 2 1/2" hex head bolts,
- (4)- 1/4" flatwashers,
- (2)- 1/4" locknuts.

Step 31.

Place the Pod assembly onto the car at this time. Center the Pod on the cars floor and set the front of the Pods floor mount at 29" from the front edge of the rear body molding. Drill (4)- 1 1/32" holes through the floormat, floor and sub floor frame using the holes in the Pods floor mounts as guides.

Attach Pod to the floor using Grade 8 bolts and using (2)- Flatbar Sub Floor Supports (Part#7885) under the sub floor for additional strength. Secure at the locations drilled with following:

- (4)- 5/16" x 1 1/2" hex head bolts, (8)- 5/16" flatwashers, (4)- 5/16" locknuts, (2)- Sub Floor Supports (#7885).



TITLE:

**RH080CCPRBOE
INSTALLATION INSTRUCTIONS**

DRAWN BY:
R.H. Rev CN/JS

DATE:
March 1, 2021

DWG NO.
#7663-2

SHEET:
12 of 19

SCALE:
Not To Scale

Step 32. On the front pod cover (Part#7898), install FNR switch using: (2)- Body Clips (Part#102297001)
(2)- 6 x 20mm Torx Head Bolts.

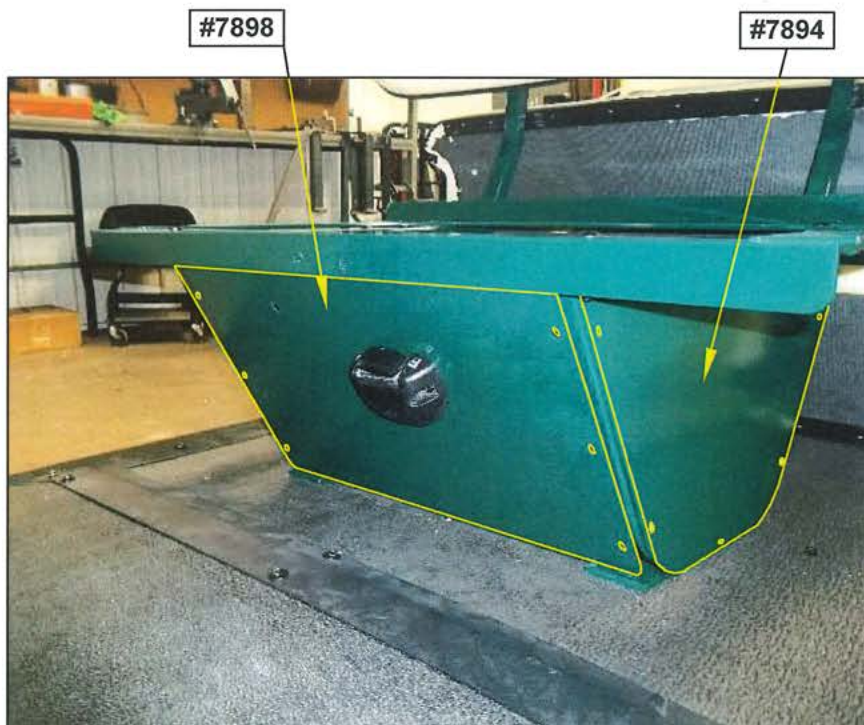
Step 33. Place the front pod cover (Part#7898), up against the front of the seat support side post (Part #7881). Drill (6)- $\frac{1}{8}$ " holes into the tube of the seat support side post using the holes in the front pod cover as guides. Secure the cover to the pod with:

(6)- $\frac{1}{4}$ " x $1\frac{1}{4}$ " Pan Head Sheet Metal Screws,
(6)- $\frac{1}{4}$ " flatwashers.

Step 34. Run FNR wires through the $1\frac{1}{2}$ " hole in floor. Connect wires and FNR switch. Adjust as needed.

Step 35. Place the pod side covers (Part#7894), up against the outside of the seat support side post (Part #7881). Drill (5)- $\frac{1}{8}$ " holes into the tube of the seat support side post using the holes in the pod side covers as guides. Secure the side cover to the pod with: (10)- $\frac{1}{4}$ " x $1\frac{1}{4}$ " Pan Head Sheet Metal Screws, (10)- $\frac{1}{4}$ " flatwashers.

Step 36. Attaching a seat bottom to the Pod. If your seat bottom has the hip restraints already on the seat, remove the hip restraints. Set the seat bottom onto the middle pod frame. Place the hip restraints under the outside flatbars on the seat hat rack. Secure the hip restraints, flatbar and seat bottom together with the OEM bolts for the hip restraints.



TITLE:

**RH080CCPRBOE
INSTALLATION INSTRUCTIONS**

DRAWN BY:

R.H. Rev CN/JS

SHEET:

13 of 19

DATE:

March 1, 2021

SCALE:

Not To Scale

DWG NO.

#7663-2

Step 37. Install painted rear body using original fasteners. Install the new Front Cover (Part#102512001) to the front of the rear body using original OEM bolts.



Step 38. Install cup holders, and dash using factory connectors. Install the Forward-Reverse switch using original clips and fasteners. Connect wires.



Step 39. Connect connector(s) behind dash and install dash using three (3) original screws.

Install front cowl support, front cowl and cowl band using factory connectors.

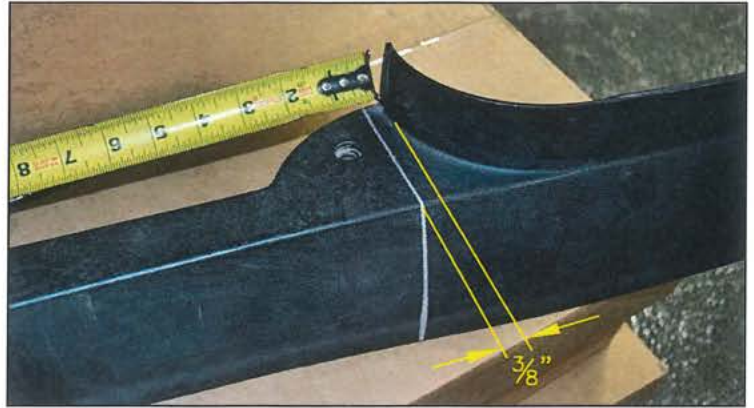
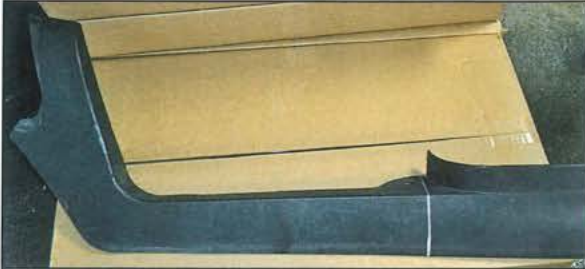


TITLE:		
RH080CCPRBOE INSTALLATION INSTRUCTIONS		
DRAWN BY:	DATE:	DWG NO.
R.H. Rev CN/JS	March 1, 2021	#7663-2
SHEET:	SCALE:	
14 of 19	Not To Scale	

NOTE: If installing the M & M side trim (#7896) continue on to step 40.

If installing the matching custom plastic molded side trim (#PA1612), skip to next page now.

Step 40. Cut side trim in two. Measure $\frac{3}{8}$ " from curve as shown. Use a square and mark a line perpendicular to the edge. Cut the trim in two on this line.



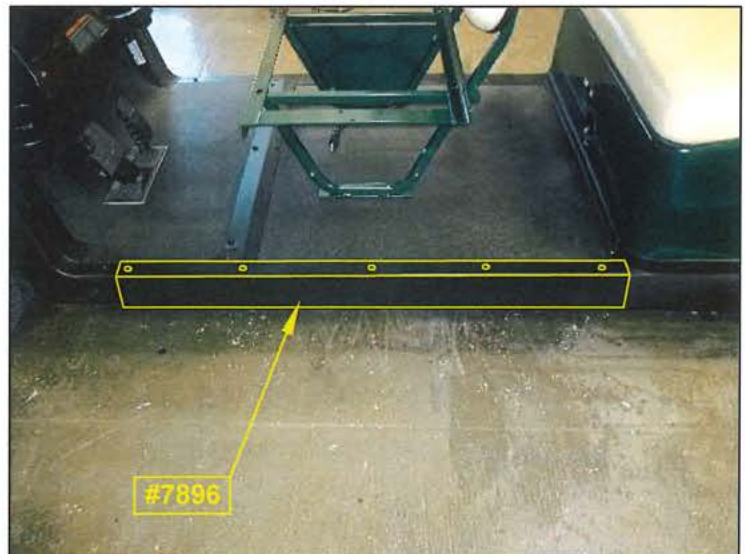
Step 41. Secure front and back trim pieces into factory locations with factory connectors.



Step 43. Install both side trims (Part #7896) to the car. (The rounded corner of side trim goes at rear of car.)

Position trim for best fit and drill (5)- $\frac{9}{32}$ " holes using holes in side molding as guides.

Secure on both sides using:
(10)- $\frac{1}{4}$ " x 2" pan head bolts,
(20)- $\frac{1}{4}$ " flatwashers,
(10)- $\frac{1}{4}$ " locknuts.



TITLE:

**RH080CCPRBOE
INSTALLATION INSTRUCTIONS**

DRAWN BY:

R.H. Rev CN/JS

SHEET:

15 of 19

DATE:

March 1, 2021

SCALE:

Not To Scale

DWG NO.

#7663-2

NOTE: If installing the matching custom plastic molded side trim (#PA1612), use the steps below. If you installed the M & M side trim (#7896), step this page.



STEP 1:

Remove (3)- OEM bolts at (Location A). Slide up the front leg cover. Remove the middle body if already installed.

STEP 2:

Install the plastic side trim (#PA1612) onto the car. Secure the side trim with the OEM bolts at (Location A). Tuck the front lip under the front leg cover before securing. Install the middle body as needed, on top of the new side trim.

STEP 3:

Secure the rear of the side trim to the car at (Location B), drill (3)- $\frac{9}{32}$ " holes through trim and into car body. (1- in middle of rear floor, 2- at end of trim) Use (3)- push pins (#1010434) to secure side trim.

*Repeat on other side.



TITLE:

**RH080CCPRBOE
INSTALLATION INSTRUCTIONS**

DRAWN BY:

R.H. Rev CN/JS

SHEET:

16 of 19

DATE:

March 1, 2021

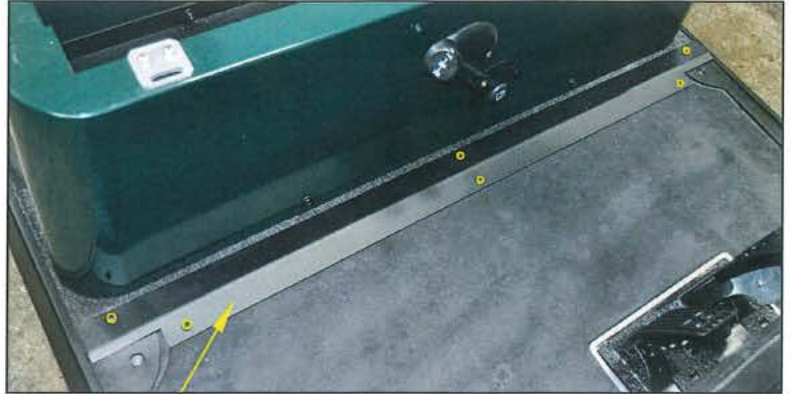
SCALE:

Not To Scale

DWG NO.

#7663-2

Step 44. Place the floor mat threshold (Part #7895) over the seam between the original floor and the floor mat $\frac{1}{2}$ " in front of the front body. Center side to side. Use the holes in the threshold as a guide and drill three (3) $\frac{1}{8}$ " pilot holes in aluminum floor. Secure using six (6) black $\frac{1}{4}$ " x $1\frac{1}{4}$ " black pan head screws and six (6) black $\frac{1}{4}$ " flat washers.



#7895

Step 45. Be sure that all wires are connected and connect battery, install rear seats and access panel.

Step 46. Re-install the cars OEM rear seat bottom and SAM or optional M&M rear seat kit / utility box.



TITLE:		
RH080CCPRBOE INSTALLATION INSTRUCTIONS		
DRAWN BY:	DATE:	DWG NO.
R.H. Rev CN/JS	March 1, 2021	#7663-2
SHEET:	SCALE:	
17 of 19	Not To Scale	

REDHAWK

4 Passenger Stretch Bolt-on Kit, Electric

PART #RH080CCPRBOE

CLUB CAR - PRECEDENT



No welding
Powder coated middle pod to match standard Club Car colors



TITLE:		
RH080CCPRBOE INSTALLATION INSTRUCTIONS		
DRAWN BY: R.H. Rev CN/JS	DATE: March 1, 2021	DWG NO. #7663-2
SHEET: 18 of 19	SCALE: Not To Scale	

REDHAWK

4 Passenger Stretch Bolt-on Kit, Electric PART #RH080CCPRBOE CLUB CAR - PRECEDENT

Bolt Kit

BLACK

- 4 - 5/16" - 1-3/4" truss head bolts
- 4 - 5/16" flatwashers
- 6 - 5/16" locknuts
- 2 - 1/4" x 2-1/2" pan head Bolts
- 10 - 1/4" x 2" pan head Bolts
- 24 - 1/4" x 1-1/4" PPHSMS
- 50 - 1/4" flatwashers
- 16 - 1/4" locknuts
- 2 - 6 x 25mm hex head bolts
- 2 - 6 x 20mm torx head bolts

ZINC

- 3 - 5/16" x 1" truss head bolts
- 3 - 5/16" flatwashers
- 3 - 5-16" locknuts

Grade 8

- 4 - 3/8" x 4" hex head bolts
- 8 - 3/8" x 3-1/2" hex head bolts
- 24 - 3/8" flatwashers
- 12 - 3/8" locknuts
- 6 - 5/16" x 3-1/2" hex head bolts
- 4 - 5/16" x 1-1/2" hex head bolts
- 20 - 5/16" flatwashers
- 10 - 5-16" locknuts

Box Kits

Box A- 30"x4"x4"(White):

- 1-Bolt Kit
- 1-Instructions
- 2- Sub Floor Supports (#7885)
- 1- Dash Wireharness (#PA1606)
- 1- Accelerator Wireharness (#PA1607)
- 1- FNR Wireharness (#PA1608)
- 2- 6" Kick Mat (#5988)
- 2- Body Clips (#102297001)
- 1- Front Cover (#102512001) w/Push pin

Box #1- 46"x5-1/2"x35" (BB):

- 1-Floor (#6558)
- 1-Middle Sub Floor (#6582)
- 2-Outer Sub Floors D&P (#6583)
- 2-Seat Support Posts (#7881)
- 1-Seat Hat Rack (#7886)
- 1-Seat Back Grab Handle (#7891)
- 1-Front Face Plate (#7893)
- 2-Pod Side Covers (#7894)
- 1-Box A

Box #2- 48 -1/2" x 7"x6" (LB):

- 1-Frame Rails D&P (#6597)
- 1-Brake Rod (#6564)
- 1-Floor Mat (#7080)
- 1-PR Side Trim (#7896)
- 1-Floor Mat Threshold (#7895)



Approved By: _____

TITLE:

RH080CCPRBOE INSTALLATION INSTRUCTIONS

DRAWN BY:

R.H. Rev CN/JS

DATE:

March 1, 2021

DWG NO.

#7663-2

SHEET:

19 of 19

SCALE:

Not To Scale

REDHAWK

4 Passenger Stretch Bolt-on Kit, Electric PART #RH080CCPRBOE CLUB CAR - PRECEDENT

Bolt Kit

BLACK

- 4 - 5/16" - 1-3/4" truss head bolts
- 4 - 5/16" flatwashers
- 6 - 5/16" locknuts
- 2 - 1/4" x 2-1/2" pan head Bolts
- 10 - 1/4" x 2" pan head Bolts
- 24 - 1/4" x 1-1/4" PPHSMS
- 50 - 1/4" flatwashers
- 16 - 1/4" locknuts
- 2 - 6 x 25mm hex head bolts
- 2 - 6 x 20mm torx head bolts

ZINC

- 3 - 5/16" x 1" truss head bolts
- 3 - 5/16" flatwashers
- 3 - 5-16" locknuts

Grade 8

- 4 - 3/8" x 4" hex head bolts
- 8 - 3/8" x 3-1/2" hex head bolts
- 24 - 3/8" flatwashers
- 12 - 3/8" locknuts
- 6 - 5/16" x 3-1/2" hex head bolts
- 4 - 5/16" x 1-1/2" hex head bolts
- 20 - 5/16" flatwashers
- 10 - 5-16" locknuts

Box Kits

Box A- 30"x4"x4"(White):

- 1-Bolt Kit
- 1-Instructions
- 2- Sub Floor Supports (#7885)
- 1- Dash Wireharness (#PA1606)
- 1- Accelerator Wireharness (#PA1607)
- 1- FNR Wireharness (#PA1608)
- 2- 6" Kick Mat (#5988)
- 2- Body Clips (#102297001)
- 1- Front Cover (#102512001) w/Push pin

Box #1- 46"x5-1/2"x35" (BB):

- 1-Floor (#6558)
- 1-Middle Sub Floor (#6582)
- 2-Outer Sub Floors D&P (#6583)
- 2-Seat Support Posts (#7881)
- 1-Seat Hat Rack (#7886)
- 1-Seat Back Grab Handle (#7891)
- 1-Front Face Plate (#7893)
- 2-Pod Side Covers (#7894)
- 1-Box A

Box #2- 48 -1/2" x 7"x6" (LB):

- 1-Frame Rails D&P (#6597)
- 1-Brake Rod (#6564)
- 1-Floor Mat (#7080)
- 1-PR Side Trim (#7896)
- 1-Floor Mat Threshold (#7895)



Approved By: _____

TITLE: RH080CCPRBOE INSTALLATION INSTRUCTIONS		
DRAWN BY: R.H. Rev CN/JS	DATE: March 1, 2021	DWG NO. #7663-2
SHEET: 19 of 19	SCALE: Not To Scale	