

Admiral

ACC-0206
Digital, Multi-Function,
GPS Speedometer



Positioning



Timing



Mileage



Speed



Voltage



Temperature






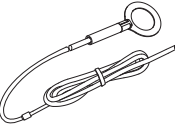

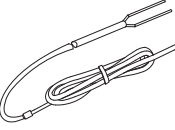
Notice

1. Please make sure to refer to the installation instructions in the Operating Instructions to avoid damage caused by installation errors.
2. The product included the battery inside and cannot be replaced, do not disassemble or replace the battery by yourself.
3. Do not pull the wiring when using it to prevent falling off or poor contact happened.
4. Please install the product in a proper location to avoid the possibility of this product being hit and prevent damage to the product.
5. The product is waterproof, but cannot be used in deep water or soaked in rain for a long time.
6. Please use the product at the specified temperature, high temperature environment may cause damage to the product.

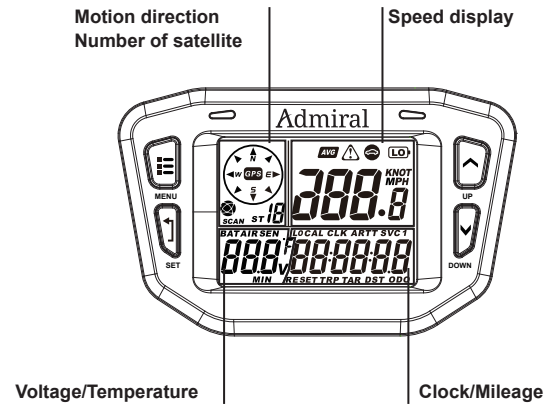
Contents

Notice	1
Product Accessories List	2
Product Specification	2
Product Wiring Diagram	4
User Interface	5
User Operation	5
Product Operation	8
Physical Features	15
Specification & Parameter	16
Product Installation	17
Product Dimension	18

PRODUCT ACCESSORIES LIST

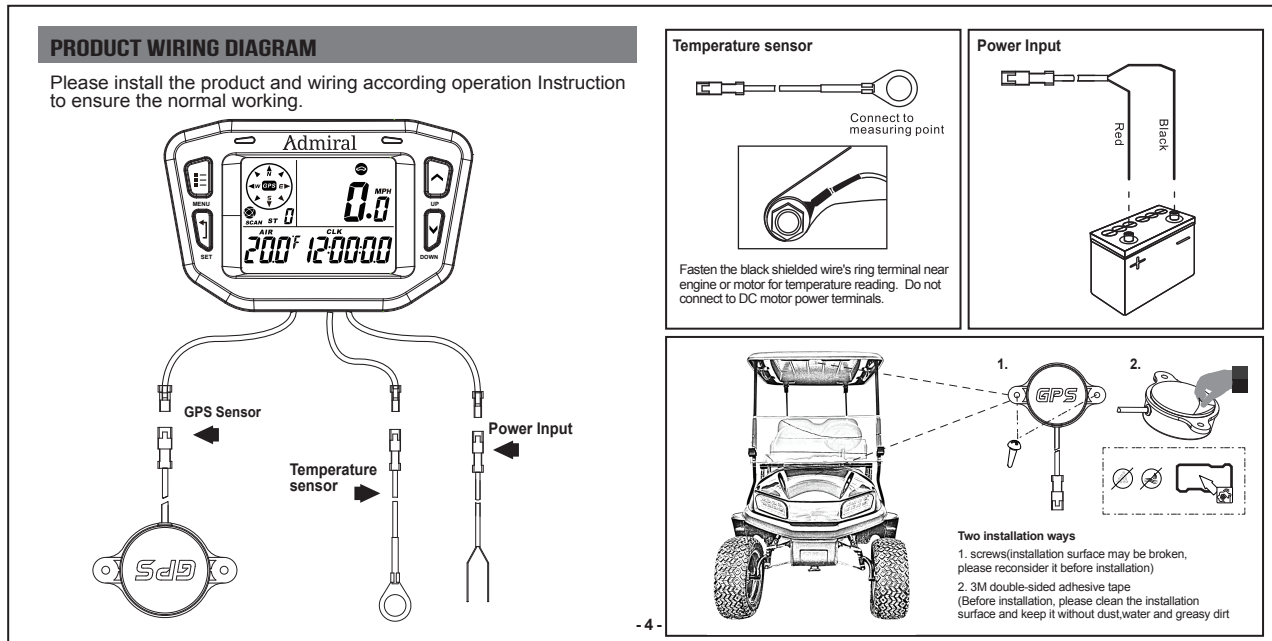
<p>1 Product*1</p> 	<p>2 User Manual*1</p> 	<p>3 Cable tie*3</p>  <p>X3</p>
<p>4 Temp Sensor PT100*1</p> 	<p>5 GPS Sensor*1</p> 	<p>6 Power Wire*1</p> 

PRODUCT SPECIFICATION



FUNCTION	ICON	UNITS	RANGE	FUNCTION	ICON	UNITS	RANGE
Current Speed		KM/H or M/H or KNOT	/	Air Temperature	AIR	C / F	-20 C — +70 C -4 F — +158 F
Average Speed	AVG	KM/H or M/H or KNOT	/	Engine Temperature	SEN	C / F	-20 C — +250 C -4 F — +482 F
Maximum Speed	MAX	KM/H or M/H or KNOT	/	Maximum Engine Temperature	MAX SEN	C / F	-20 C — +250 C -4 F — +482 F
Alert Speed		KM/H or M/H or KNOT	0-399KM/H	Alert Temperature	SEN	C / F	-20 C — +250 C -4 F — +482 F
Odometer	ODO	KM/H or M/H or KNOT	0-500000KM	Battery Voltage	V	V	12-36V
Trip Mileage	TRP DST	KM/H or M/H or KNOT	0-500000KM	Maximum Battery Voltage	MAX V	V	72V
Target Mileage	TAR DST	KM/H or M/H or KNOT	0-1000KM/H	Engine Temperature	MIN V	V	400°
Total Hours	ART	H:M	0-99999.9H				
Job Hours	RT	H:M	0-99999.9H				
SVC Hours 1	SVC 1	H	0-1000H				
SVC Hours 2	SVC	H	0-1000H				
Clock	CLK LOCAL CLK	H:M:S	24H				

※ The Air Temperature for reference only, it maybe existed deviation with actual value. - 3 -



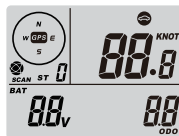
USER INTERFACE

All the information that pilot is on one of these 3 screens. The user has the choice of staying on **Screen 1**, **Screen 2** or **Screen 3**. Press **"MENU"**, the 3 main interfaces could be switched freely.



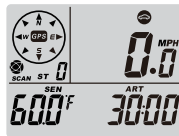
Screen 1

- Direction of motion
- Number of satellites
- Speed
- AIR Temperature
- Clock



Screen 2

- Direction of motion
- Number of satellites
- Speed
- Battery voltage
- Odometer (ODO)



Screen 3

- Direction of motion
- Number of satellites
- Speed
- Engine TEMP
- Total time (ART)

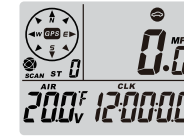
- 5 -

USER OPERATION

1 Screen 1 Operation

Screen 1:

- Direction of motion
- Number of satellites
- Speed
- AIR Temperature
- Clock



Under the Screen 1 interface, press the **"UP"** or **"DOWN"** button can view more data information.

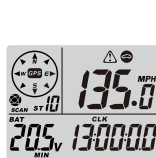


- Max speed
- Max AIR temperature
- Clock



- Average speed
- Max battery voltage
- Clock

- 5 -



- Alert speed
- Min battery voltage
- Clock

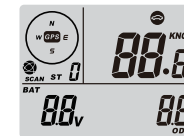


**Back to Main Interface
At Circle**

2 Screen 2 Operation

Screen 2:

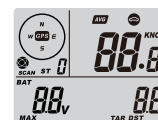
- Direction of motion
- Number of satellites
- Speed
- Battery voltage
- Odometer (ODO)



Under the Screen 2 interface, press the **"UP"** or **"DOWN"** button can view more data information)



- Max speed
- Max engine temperature
- Trip distance



- Average speed
- Max battery voltage
- Target distance

- 6 -

- Alert speed
- Min battery voltage
- Target distance

**Back to Main Interface
At Circle**

3 Screen 3 Operation

Screen 3:

- Direction of motion
- Number of satellites
- Speed
- Engine TEMP
- Total time (ART)

Under the Screen 3 interface, press the **“UP”** or **“DOWN”** button can view more data information)

- Max speed
- Max engine temperature
- Job hours

- Average speed
- Max battery voltage
- SVC1 hour

- Alert speed
- Min battery voltage
- SVC2 hour

**Back to Main Interface
At Circle**

PRODUCT OPERATION

A.Product Startup and shutdown

- a) Press any button to turn on the device.
- b) Press and hold the **“MENU”** button for 2s to off at any interface.

B.Setup Mode

- a) Press the **“MENU”** button until display Screen 1 or Screen 2 or Screen 3.
- b) Setup at circle as following
 KM/H → Speed Alert → Temp Unit → Temp Alert → SVC1→ SVC2→ TAR DST
 → CLK→ H
 LOCAL CLK→ H →M→S
- c) Press **“SET”** or **“MENU”** to switch the Setup.

C.Exit Setup

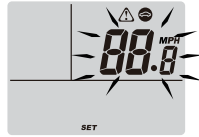
- a) Press **“SET” + “DOWN”** 1s to exit.
- b) Exit automatically 30s later.

1.Setup speed units (Defaults:KM/H)

- a) Press and hold the **“SET”** button until screen display **“SET”** icon and **“KM/H”** icon start flashing.
- b) Press the **“UP”** or **“DOWN”** button until you get desired unit , release the button and finish your confirm.(Press the **“SET”** button can enter next setup)

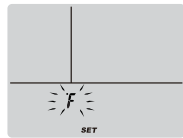
2. Setup alert speed value (Defaults: 100KM/H)

Press the "UP" or "DOWN" button until you get desired alert speed value , release the button and finish your confirm.(Press the "SET" button can enter next setup) .



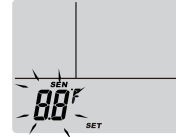
3. Setup Temperature units (Defaults: °C)

Press the "UP" or "DOWN" button until you get desired temperature unit , release the button and finish your confirm.(Press the "SET" button can enter next setup)



4. Setup Alert Temperature Value (Defaults: 100 °C)

Press the "UP" or "DOWN" button until you get desired alert temperature value , release the button and finish your confirm.(Press the "SET" button can enter next setup)



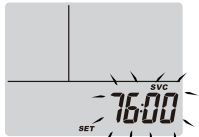
5. Setup SVC1 (Defaults: 1000H)

Press the "UP" or "DOWN" button until you get desired SVC1 Timer value , release the button and finish your confirm.(Press the "SET" button can enter next setup)



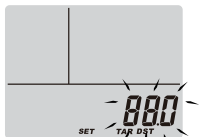
6. Setup SVC (Defaults: 0—1000H)

Press the "UP" or "DOWN" button until you get desired SVC Timer value , release the button and finish your confirm.(Press the "SET" button can enter next setup)



7. Setup Target mileage (Defaults: 0—1000KM)

Press the "UP" or "DOWN" button until you get desired Target mileage value , release the button and finish your confirm.(Press the "SET" button can enter next setup)



8. Setup clock mode (CLK)

Press the "UP" or "DOWN" button until you get desired clock mode , release the button and finish your confirm.(Press the "SET" button can enter next setup)

Select CLK mode

Select LOCAL CLK mode

H:0-23hour

M:0-59minutes

S:0-59seconds

C.Reset

1.Get into reset

- Press and hold the **"SET"** button for 2s to into reset at any sub-interface.
- Product defaulted get into the Max Speed Reset Interface, the current reset value start flashing.

2.Reset Operation

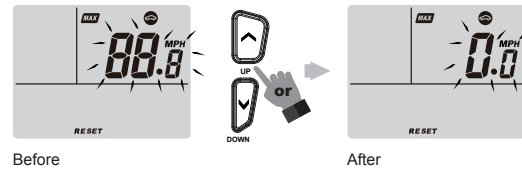
- Press button **"UP/DOWN"**, reset the value of the current interface.
- Press button **"MENU/SET"** to switch to the next desired value.

3.Reset exit

- Press and hold buttons **"SET"**+ **"DOWN"** for 1s to exit the reset interface.
- It will exit without no operation within 30s.

4.Reset Interface demo

a) Reset the Max Speed Value

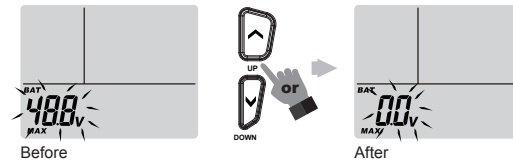


Before

After

Press **UP/DOWN** to reset

b) Reset the Max Voltage Value



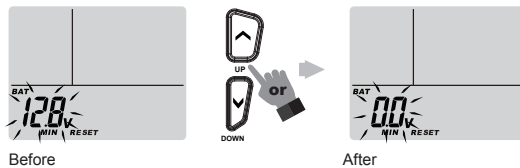
Before

After

Press **UP/DOWN** to reset

- 11 -

c) Reset the Min Voltage value

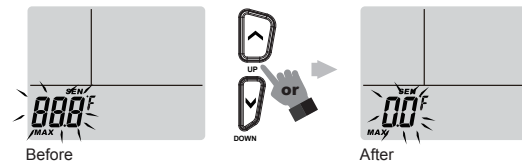


Before

After

Press **UP/DOWN** to reset

e) Reset the Max Temp of Sensor Value

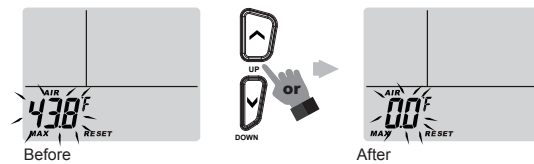


Before

After

Press **UP/DOWN** to reset

d) Reset the Max Temp of air Value

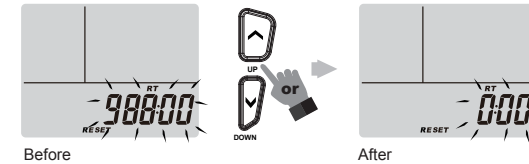


Before

After

Press **UP/DOWN** to reset

f) Reset Job Hours Value



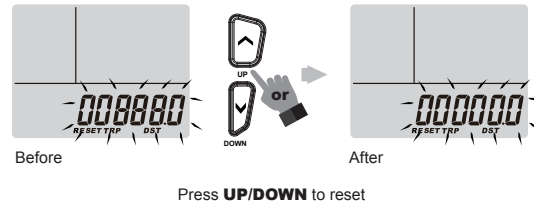
Before

After

Press **UP/DOWN** to reset

- 12 -

g) Rest Trip Distance Value

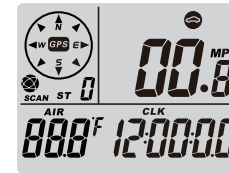


D. Other

1.SM002 will enter into screen 1 after reset

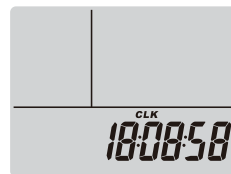
- a) The upper left of LCD display number of satellites and direction of motion.
- b) The upper right of LCD display current speed.
- c) The lower left of LCD alternate display battery voltage and ambient temperature.
- d) The lower right of LCD display time and mileage.

Theme 1 : speed+ AIR temperature+clock



The main display when standby

2.The backlight will off without any operation within 30s. It will only display clock and no other display if without any operation for 5 min(as below picture); it will back to normal display when have button operation and GPS speed.



- ※ **Setting time:** Please set it after receiving the stallite signal and the stallite keep good.
If user choose "CLK" mode, only enter the hours value to finish the setting, no need to enter the minutes and seconds.
If user choose "LOCAL CLK", enter all the values including hours, minutes and seconds to finish the setting.

PHYSICAL FEATURES

A.SVC alert

NO	SVC TYPE	SETTABLE RANGE	LCD REMINDER METHOD	LED REMINDER METHOD
1	SVC1	0-1000H	"SVC1"icon flashes	Yellow Flashes
2	SVC	0-1000H	"SVC2"icon flashes	Yellow Flashes
3	Target mileage reached alert	0-1000H	"TAR"icon flashes	Yellow Flashes

- ※ 1. Multiple reminders may occur simultaneously.
2. Press and hold the set button for 2S to clear reminders.

PHYSICAL FEATURES

B.Warning alert

NO	WARNING TYPE	SETTABLE RANGE	LCD REMINDER METHOD	LED REMINDER METHOD
1	Speeding alert	0-399KM/H	Warning icon flashes	Red light flashes
2	Over-temperature alert	-20℃-250℃	/	Red light flashes
3	Low voltage of internal battery	/	Battery icon flashes	Red light flashes
4	Bad satellite signal	/	"SCAN"icon flashes	/

- ※ 1. When reach to the alert value, red flashing at twice every 5s, and LCD display the current reminder content.
2. When happen Multiple reminders at the same time, display alternately.
3. Press and hold the button "SET" for 1s to clear the reminder.

- 15 -

SPECIFICATION & PARAMETER

1.Specifications

Product Name	GPS Speed table
Item No.	RL-SM002
Color	Black
Housing Material	ABS
Product Size	115.6x72x23.6mm
Display Mode	White backlight
Display window size	57.8x43.4mm
Product Weight	365g
Waterproof rate	IP67

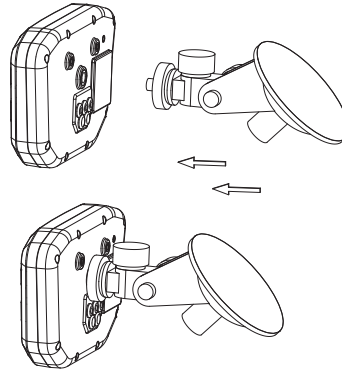
2.Parameter

External Voltage Supply	12-72VDC
Internal Battery	3.7v lithium battery 500mAh rechargeable
Speed Range	0-399KM/H
Temperature Range	-20-250℃
Total Time	0-99999.9H
Partial time	0-99999.9H (Can be reset)
Total Mileage	0-500000KM
Partial Mileage	0-500000KM (Can be reset)

- 16 -

PRODUCT INSTALLATION

Installation Method 1



※ Steering Column and dash mounting brackets sold separately. Visit golfcart.com for speedometer mounting options.

PRODUCT DIMENSION

